

Use powdered and fine frit in a detailed frit casting mold to make beautifully shaded frit casted birds that can be fused to compatible/fusible sheet glass.

**Materials Needed** Creative Paradise Molds: [LF80 Bird and Twig](#), [GM01 Small Sushi Slump](#), [GM05 Rectangle Slump](#). Uroboros COE 96 sheet glass: Clear w/ Green/ Blue/ Purple Fractures/ Green Streamers, Black Frit & Stringer on White Opal, Riviera Blue Opal. System 96 Frit: F1 Powders = Cobalt, Black, Mauve Opal, Orange Opal, Chestnut Brown Opal, Medium Blue Opal, Medium Amber Trans, F2 Fine = Turquoise Blue Opal, Alpine Blue Opal, Khaki Opal, Terra Cotta Opal, Other Materials = [Zyp Boron Nitride Spray](#), Thin Fire Paper, Powder Sifter, Cutting Tools and Suitable Kiln, Respirator:NIOSH-approvedforspecificprocess:fume, vapor, or dust- trapping. **Always wear suitable breathing mask when working with powdered frit**

Streamers, Black Frit & Stringer on White Opal, Riviera Blue Opal. System 96 Frit: F1 Powders = Cobalt, Black, Mauve Opal, Orange Opal, Chestnut Brown Opal, Medium Blue Opal, Medium Amber Trans, F2 Fine = Turquoise Blue Opal, Alpine Blue Opal, Khaki Opal, Terra Cotta Opal, Other Materials = [Zyp Boron Nitride Spray](#), Thin Fire Paper, Powder Sifter, Cutting Tools and Suitable Kiln, Respirator:NIOSH-approvedforspecificprocess:fume, vapor, or dust- trapping. **Always wear suitable breathing mask when working with powdered frit**



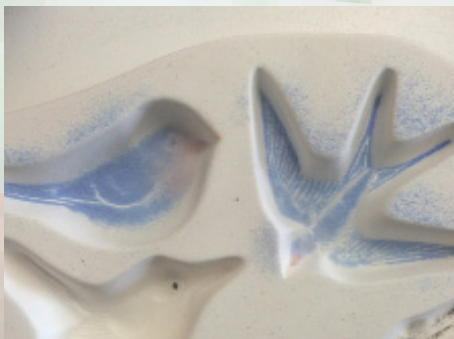
Treat the frit casting mold with Zyp making sure to hold the mold at various angles while spraying. Place a small amount of powdered Black frit in the eyes of the birds. Sift a bit into the top deep areas of the bark on the twig.



Place a small bit of powdered Orange Opal frit in the birds beaks. Sift powdered Cobalt in the edges of the tail and wings of the top bird and the flying bird.



Sift powdered Mauve Opal frit into the head and throat area of the top sitting bird.



Sift powdered Medium Blue Opal frit into the top sitting and flying birds, leaving the belly of the top sitting bird exposed and much of the raised details in each bird exposed as shown in the photo above.



Fill the top sitting bird cavity with 16 grams of fine Alpine Blue opal frit.



Fill the flying bird cavity with 22 grams of fine Turquoise Blue Opal frit.



Sift powdered frit in the tail/wing tip and chest of wren. Sift powdered Chestnut into the wings/tail/back/head of the wren. Use a small brush to sweep the powdered frit off of a small line under and next to the eye as shown above in photo.



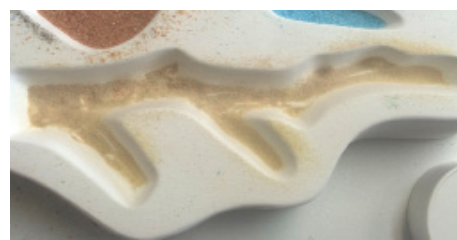
Sift powdered Medium Amber all over the wren cavity, use a small brush to gently sweep the Medium Amber from a thin line above the belly as shown in the photo above.



Place fine Khaki Opal frit into the head and belly area of the wren.



Fill the wren cavity with 17 grams of fine Terra Cotta frit.



Sift powdered Medium Amber frit in the low areas of the twig cavity.



Place fine Khaki frit in the tips of the branch. Place fine Terra Cotta Opal frit in the main area of the branch.



Fill the branch cavity with 43 grams of fine Chestnut Brown opal frit. Fire the mold using the firing schedule found in Table 1.



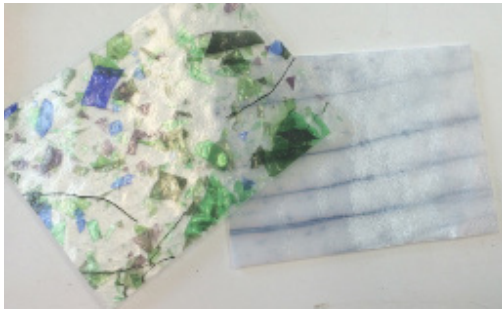
After firing the glass and allowing it to cool naturally, demold the glass and wash the frit castings to remove any residual glass separator.



Cut a 3.75" square of the Black Frit/Streamer on White glass with a black streamer in the center of the glass. Cut a 4" square of Riviera Blue. Place the Black Frit Streamer glass with the vivid side of the glass down on the Riviera Blue and place the sitting blue bird in the center along the faded black streamer.



Fire the blue sitting bird on the sheet glass using the firing schedule found in Table 2. It is also possible to "pre-fuse" the sheet glass and then tack fire the bird into place as shown in the next section



Cut a 5" x 7" piece of the Black Frit/Streamer on White glass and of the Clear with Green/Blue/Purple fractured Streamers. Place the vivid side of the Black Frit Streamer on White down on a kiln shelf and the textured side of the Clear Streamer glass down on the faded side of the Black Frit Streamer White glass and fire using the firing schedule found in Table 3.



Arrange the branch, flying bird and wren on the fused 5" x 7" to suit your own artistic preferences and fire the glass using the firing schedule found in Table 2. To slump the fused glass pieces Place the 4" square piece on a GM01 that has been treated with a glass separator and the 5" x 7" piece on the GM05 which has been treated with a glass separator and fire using the schedule found in Table 3.

Table 1\* Tack Fire Frit Castings

Segment	Rate	Temp in F	Hold in mins
1	300	1215	30
2	350	1380	05
3	9999	950	60

Table 2\* Tack Fire Frit Castings and Glass

Segment	Rate	Temp in F	Hold in mins
1	200	500	20
2	200	1215	30
3	50	1250	20
4	350	1410	05
5	9999	950	90
6	100	500	05

Table 3\* Full Fuse Base Glass

Segment	Rate	Temp in F	Hold in mins
1	200	1215	45
2	50	1250	20
3	300	1465	05
4	9999	950	90
5	100	500	05

\* [Please click here to read our important firing notes before you fire in your kiln using our schedules.](#)

The single bird dish on the left was created by fusing the base glass prior to tack firing the bird to the glass and then slumping. The single bird dish on the right was created by tack firing the bird and the sheet glass in one firing and then slumping.

