

Reactive Butterfly Display

Materials:

- LF271 Extra Small Easel
- GM277 Angle Drape
- COE96 Glass (See Below)
- Suitable Glass Separator/ZYP
- Glass Cutting Supplies
- Candle or Small Flame
- Kiln Shelf Paper
- Frit Placement Tools

This tutorial uses reactive colors along with self-reacting Vanilla Cream Opal for a uniquely vibrant finish. Check to see if your colors are properly reactive for similar results. Most manufacturers have readily available lists.

[Click here for Oceanside's](#) (COE96)

[Click here for Bullseye's](#) (COE90)

Suggested Glass:

- | | | |
|--------------------|--------------------|--------------------|
| - Sheet Glass: | - F3 Medium Frits: | - Other: |
| - Sea Green Trans. | - Hydrangea Opal | - Deep Aqua Trans. |
| - Vanilla Cream O. | - Sky Blue Trans. | - Stringers |
| - Pale Blue Trans. | - Vanilla Cream O. | |
| - Ming Green Tr. * | - Ming Green Tr. * | |
| - Standard Clear | - Sea Green Trans. | |

*Ming Green has been brought back by [Youghioghney Glass](#)



Creative Paradise Inc.

Prepare all molds well with suitable separator before beginning. We recommend spray-on ZYP.

Always wear a mask when applying spray-on separator.

Butterfly:



Image 1:
Start by cutting one 4.5" diameter circle of Sea Green Transparent and one 4.25" circle of Vanilla Cream Opal. Center the Vanilla Cream atop the Sea Green.



Image 2:
Refer to the Patterns and Diagram on **Page 3** to cut out and arrange the design atop the Vanilla. Each Pattern lists the color used.

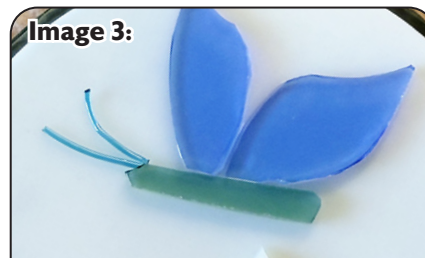


Image 3:
For the antenna, use heatproof gloves to hold a Deep Aqua stringer above a candle flame. As it warms, bend it into a gentle curve. Once shaped, nip two small segments (about 1" each) and place them atop the head.

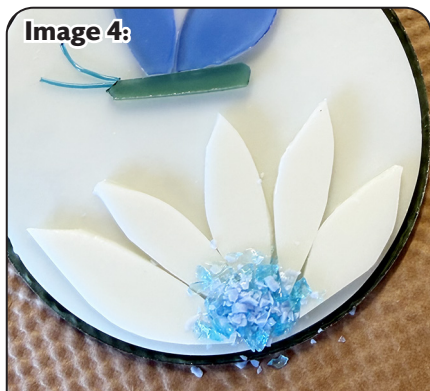


Image 4:
Pile F3 Hydrangea Opal and F3 Sky Blue Transparent frit in the center of the flower.



Image 5:
Scatter grains of F3 Vanilla Cream and F3 Ming Green Trans. across the "sky" area for extra reactivity.

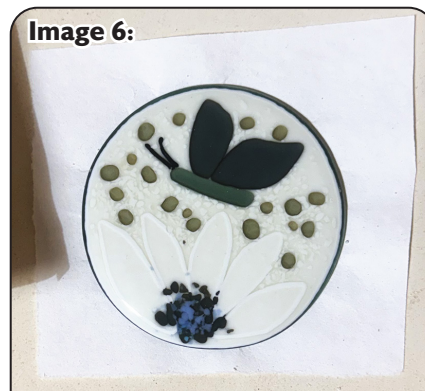


Image 6:
Transfer to a sheet of kiln shelf paper on a level shelf in the kiln and fire using the suggested schedule in **Table 1** on **Page 2** or your own preferred full fuse.



Image 7:

Begin filling the easel by scattering F3 Vanilla Cream Opal around the bottom. Top the frit with nipped bits of Vanilla Cream sheet glass.



Image 8:

Add a thin layer of nipped pieces of Ming Green to the empty space. Allow them to slightly overlap the edge of the Vanilla Cream.



Image 9:

Add nipped pieces of Sea Green atop the Ming Green, and fill in some of the gaps between them with F3 Sea Green.



Image 10:

Back everything with nipped Clear until full. If using fill weights, this is about 188 grams of glass total. Transfer to a level shelf in the kiln and fire with the suggested schedule in **Table 1** or your own preferred full fuse.



Image 11:

Place the primed GM277 Angle Drape on a level shelf in the kiln and set the fused easel blank on top. Make sure the straight “back” of the easel is centered on the flat top of the GM277 for an even drape (**Image 12**). Fire with the suggested schedule in **Table 2** or your own favorite gentle draping schedule.



Image 12:

Table 1: Full Fuse *			
Seg.	Rate	Temp (°F)	Hold
1	300	1150	45
2	150	1300	20
3	400	1460	10
4	9999	950**	60

Table 2: Drape *			
Seg.	Rate	Temp (°F)	Hold
1	275	1275	15
2	9999	950**	60

* Before firing, it's important to know your kiln to see if you need to adjust our suggested schedules for your use. For tips on how to do that, [please click here to see our Important Firing Notes!](#)

** If using COE90, adjust these to 900°F



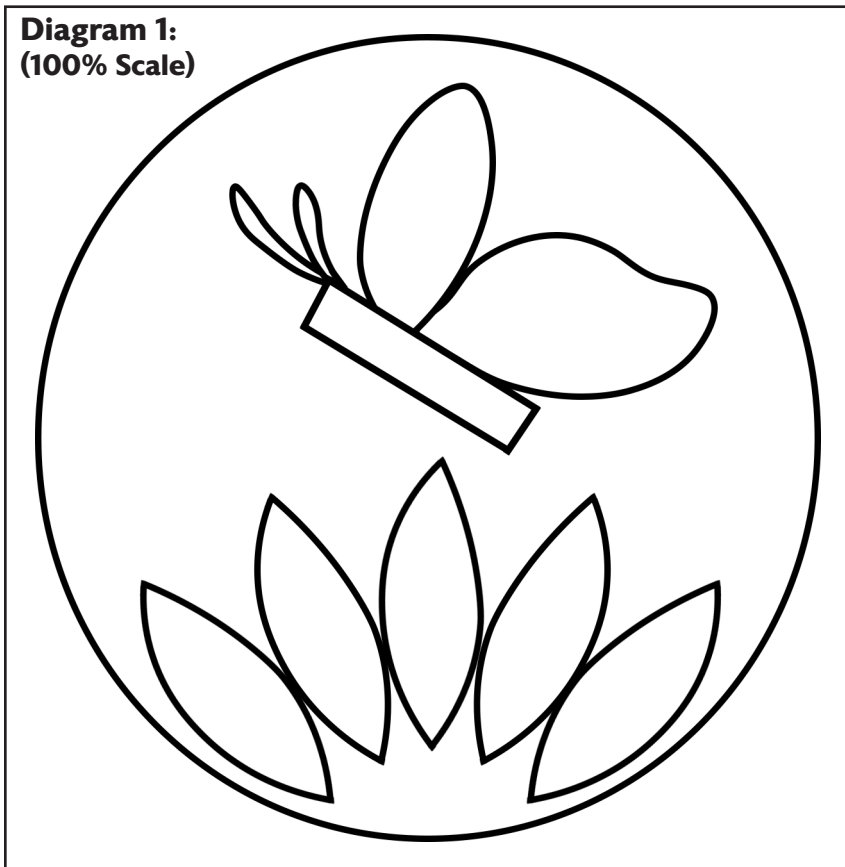
Example 1: (Easel Only)

Patterns and Placement Diagram:

This page has been left without a background for easier printing.
Firing schedules are replicated here for the same reason.

****When printing, make sure to print at "Actual Size" or 100%!****

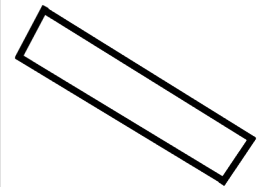
**Diagram 1:
(100% Scale)**



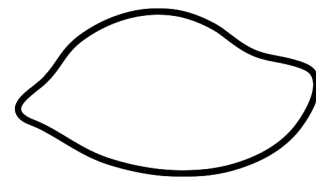
**Front Wing
(Pale Blue Trans.)**



**Body
(Sea Green Tr.)**



**Back Wing
(Pale Blue Trans.)**



**Flower Petal
(Vanilla Cream Opal)**

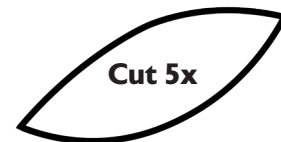


Table 1: Full Fuse *

Seg.	Rate	Temp (°F)	Hold
1	300	1150	45
2	150	1300	20
3	400	1460	10
4	9999	950**	60

** If using COE90, adjust this to 900°F

Table 2: Drape *

Seg.	Rate	Temp (°F)	Hold
1	275	1275	15
2	9999	950**	60

** If using COE90, adjust this to 900°F

* Before firing, it's important to know your kiln to see if you need to adjust our suggested schedules for your use. For tips on how to do that, [click here for our Important Firing Notes!](#)

Featured Molds:



**LF271 Extra
Small Easel**

Mold Size:
7.25" L x 6.5" W x 1.5" T
Fill Weight:
188 grams



**GM277
Angle Drape**

Mold Size:
9" L x 8.5" W x 4.75" T
Diagonal:
12.5" L

www.creativeparadiseglass.com

Creative Paradise Inc.