

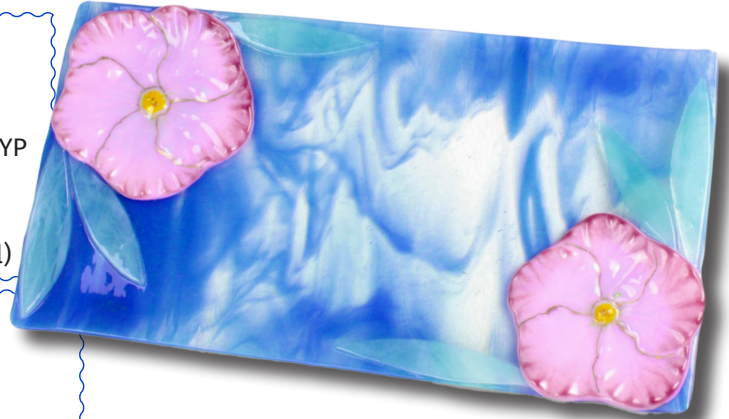
Tropical Tray *Creative Paradise Inc.*

Materials:

- LF167 Two Small Hibiscus
- GM97 Handle Tray
- COE90 Glass (See Below)
- Suitable Glass Separator/ZYP
- Frit Placement Tools
- Glass Cutting Supplies
- Kiln Shelf Paper
- Liquid Fired Gold (Optional)

Suggested Glass:

- **Powder Frits:**
 - Cranberry Pink
 - Neo Lavender
 - Canary Yellow
- **Fine Frit:**
 - Petal Pink
- **Sheet Glass:**
 - Clear/Egyptian Blue Streaky
 - Aqua Blue Tint/White Streaky



Treat the molds thoroughly with suitable separator. We recommend spray-on ZYP. **Always wear a mask when applying spray-on separator or using powder frits.**

Once the separator has dried, begin by adding Powder Canary Yellow to the centers of the hibiscus flowers (**Image 1**).

Carefully add a small amount of Powder Cranberry Pink to the outside edges of each petal (**Image 2**).

Sprinkle Powder Neo Lavender in and around the veins of each petal (**Image 3**).

Back everything with a layer of Fine Petal Pink until each flower is about 1/4" full of frit. If using fill weights this is about 55 grams for the smaller hibiscus and 60 grams for the larger.

Transfer the mold to a level shelf in the kiln and fire using the suggested schedule in **Table 1** or your own preferred Tack Firing schedule. Once the glass has fused and cooled, gently remove it from the mold and remove any residual separator with water and a stiff-bristled (but not wire) brush.

Set the flowers aside and cut four long leaves (**Pattern 1, Page 2**) and two short leaves (**Pattern 2, Page 2**) from Aqua Blue/White sheet glass.

Cut and clean a 7" x 13" piece of Clear/Egyptian Blue Opal Streaky sheet glass. Arrange the flowers and leaves on top according to your own artistic preferences or using the arrangement detailed in **Diagram 1 on Page 2 (Image 5)**.

Transfer the glass to a suitably sized sheet of Kiln Shelf Paper on a level shelf in the kiln and fire using the suggested schedule in **Table 1** or your own preferred Tack Firing schedule.

Table 1: Tack Fire*

Seg.	Rate	Temp (°F)	Hold
1	250	1215	30
2	50	1250	20
3	350	1420	05
4	9999	900**	60
5	100	500	05

**If using COE96, adjust this to 950°F

*Before firing, it's important to know your kiln to see if you need to adjust our suggested schedules. For tips on how to do that, [please click here to see our Important Firing Notes!](#)



Slumping and Decorating:

Once the glass has cooled, center it on the GM97 that has already been primed with separator.

If desired, you can add additional elements of Liquid Fired Gold at this point. The example featured on **Page 1** utilized Liquid Fired Gold to highlight the edges of each hibiscus petal as well as the flower center.

Apply the Liquid Fired Gold before slumping to allow the gold to mature during the slump firing. If you don't have Liquid Fired Gold, the same look can also be achieved with a quality Metallic Gold Paint Pen after the final firing.

Once the glass and any desired additional decorations are in place, transfer the mold and glass to a level shelf in the kiln and fire using the suggested schedule in **Table 2** or your own favorite Slumping schedule.

Table 2: Slump*

Seg.	Rate	Temp (°F)	Hold
1	250	1215	30
2	50	1250	15
4	9999	900**	60
5	100	500	05

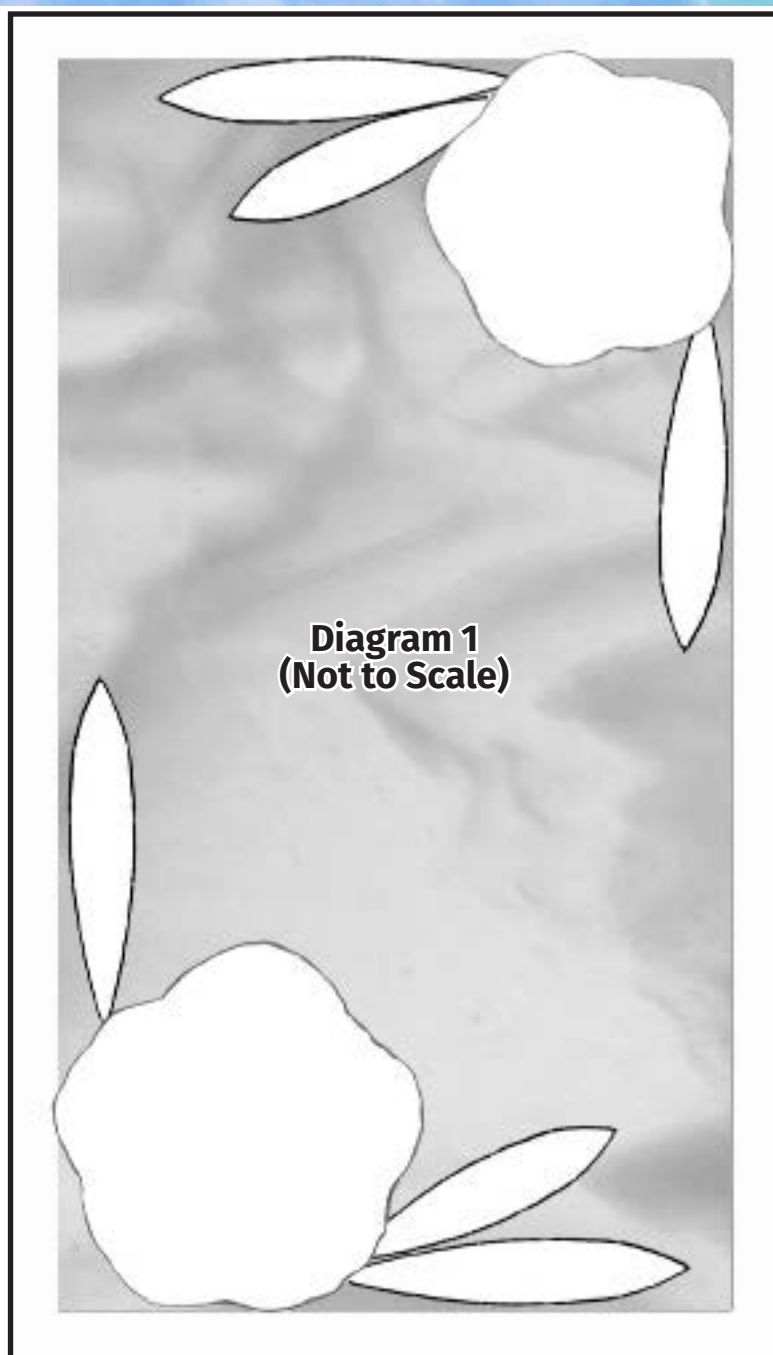
**If using COE96, adjust this to 950°F

*Before firing, it's important to know your kiln to see if you need to adjust our suggested schedules. For tips on how to do that, [please click here to see our Important Firing Notes!](#)



For more information, tutorials, and molds, visit our website:
www.creativeparadiseglass.com

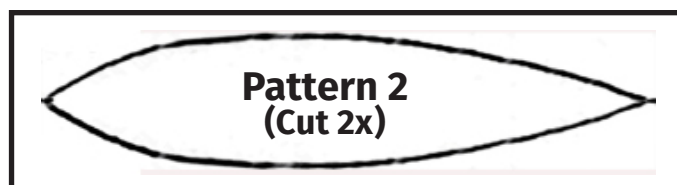
Creative Paradise Inc.



**Diagram 1
(Not to Scale)**



**Pattern 1
(Cut 4x)**



**Pattern 2
(Cut 2x)**

****If printing, make
sure to print "Actual
Size"/100%!****