



Frit-Cast Butterflies

Creative Paradise Inc.

Materials:

- [LFI07 Swallowtail Butterfly](#)
- COE96 Frits (See Below)
- Suitable Glass Separator/ZYP
- Frit Placement Tools
- 18-Gauge Bare Copper Wire

Suggested Glass:

- | | |
|--------------------|------------------------|
| - F1 Powder Frits: | - F2 Fine Frits con't: |
| - Cobalt Trans. | - Moss Green Trans. |
| - Deep Aqua Trans. | - Dark Amber Trans. |
| - Yellow Opal | - F3 Medium Frits: |
| - F2 Fine Frits: | - Pastel Green Opal |
| - Chestnut Opal | - Clear |
| - Yellow Trans. | |



Example 1

Before beginning, prepare the mold well with suitable glass separator. We recommend spray-on ZYP. **Make sure to always wear a mask when applying spray-on separator or using powder frits.**

General Note:

These butterflies can be created in a variety of thicknesses to suit the intended project. While the fill weight for a Full Fuse is around 85 grams, you can fill them to as little as 43 grams (about 1/4" full) and take them to a lower Tack Fire temperature to create thinner pieces. For thinner pieces it's better to use smaller grains of frit (e.g. Powder and Fine) as larger grains will remain textured at lower temperatures.

Green Butterflies (Example 1):

Once the separator is dry, begin by placing F1 Cobalt into the wing markings and lower half of the body (**Image 1**). Fill the remainder of the body with F2 Chestnut and gently sift or otherwise place F2 Deep Aqua along the edges of the wings (**Image 2**).

Cover the butterfly with a thin layer of F1 Yellow Opal (**Image 3**). Add F2 Yellow Trans. to the area of the wings closest to the body and F2 Moss Green to the outside edges of the wings. Place a small amount of F2 Dark Amber over the Moss Green in the lower sections and top tips of the wings and over the body (**Image 4**).

Back everything with a layer of F3 Pastel Green (**Image 5**) before finishing with F3 Clear (**Image 6**). If using fill weights, add the Clear until the desired fill weight is achieved (ranging from 43-85 grams). Gently sweep the frit back from the edges of the mold and mound it towards the middle.

For antennae, cut two 5" pieces of 18-Gauge Bare Copper Wire. Bend the top 1/4" of each into right angles and place the bent tip into the frit at the top of the butterfly's body (**Image 7**). If creating a thinner piece, make sure there is still enough frit to hold the antennae in place and make sure they don't poke through the front.

Once ready, transfer the mold to a level shelf in the kiln and fire using the suggested schedule in **Table 1** or your own preferred suitable schedule.

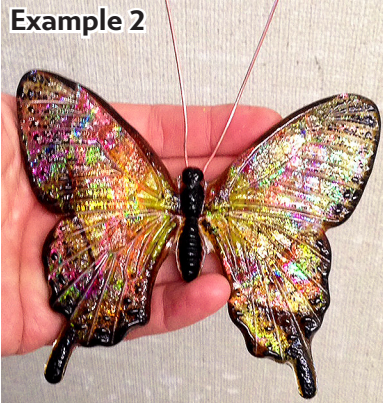
Table 1: Full Fuse/Tack Fire*			
Seg.	Rate	Temp (°F)	Hold
1	300	1150	10
2	150	1300	30
3	400	1460 (85g)	10 (85g)
		1400 (43g)	05 (57g)
4	9999	950**	60

**If using COE90, adjust this to 900°F

*Before firing, it's important to know your kiln to see if you need to adjust our suggested schedules for your use. For tips on how to do that, [please click here to see our Important Firing Notes!](#)

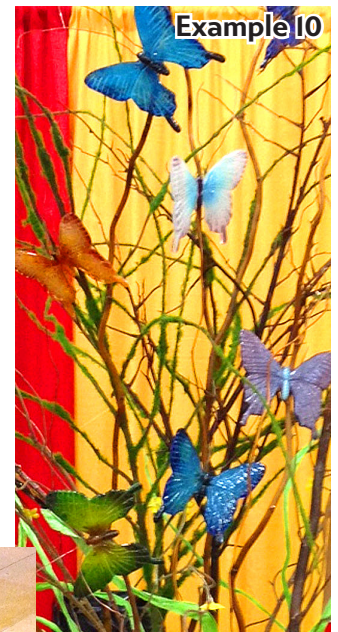
Display and Design Ideas:

There's a multitude of ways to display your butterflies once they've fused and cooled! You can glue or epoxy an alligator clip to the back and clip the butterfly into floral arrangements or onto wires or tubes. Thinner butterflies can even be Tack Fired onto other glass projects like **Example 8** below (but to retain their texture, don't exceed 1300°F).



Examples 2 & 3: These butterflies were made with nipped pieces of Clear Dichroic sheet glass fired dichroic side down with various compatible frit colors in front of and behind them.

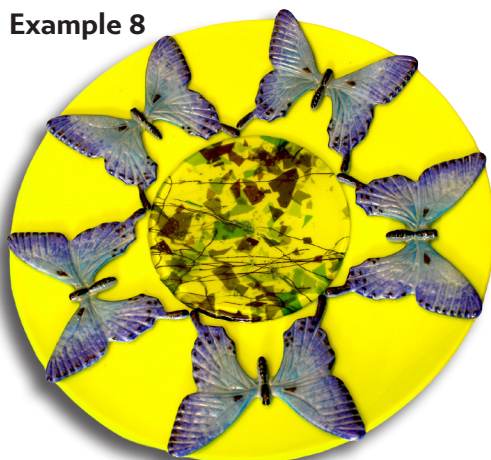
Example 4: This butterfly used Uroboros Metallic Irid on Clear F7 Mosaic frit placed iridized side down and backed with various jewel-toned frit colors.



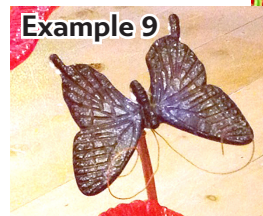
Example 5:
F2 Black, F2 Plum, F1 Deep Aqua. Backed with F3 White

Example 6:
F2 Black, F2 Dark Amber, F2 Med. Amber. Backed with F3 Yellow Opal.

Example 7:
F1 Black, F1 Orange, bits of Dichroic on Black. Backed with F3 Yellow Opal.



Example 8: Very thin butterflies made with Powder and Fine frits that were then Tack Fired to a pre-fused 13" diameter blank.



Examples 9 & 10: These butterflies have been glued onto springs on copper tubes to give them motion and allow for display in the garden or in flower pots.

For more information, tutorials, and molds, visit our website: www.creativeparadiseglass.com