

Painterly Tornado Bowl



Colors Used:
Champagne, Bronze, Sea Green

By placing similar patterns of glass shapes in alternating layers, you can achieve watercolor-like color gradation.

The spin of the GM276 Tornado mold further enhances the mixing effect, resulting in a twisting spiral of color!

General Materials:

- [GM276 Tornado](#)
- Fusible Compatible Sheet Glass (three colors)
- Suitable Glass Separator
- Thin Fire Paper
- Glass Cutting Tools

Before You Begin:

- We recommend using ZYP Boron Nitride spray to prime our molds
- If you would like a video on how we prime with ZYP, [please click here](#)
- Our firing schedules are suggestions. You know your kiln best! Adjust them as necessary.
- If you haven't, get to know your kiln before firing. For our suggestions on how to do that, [please click here](#)
- Contact us at creativeparadiseinc@live.com with any other questions

Choosing Colors:

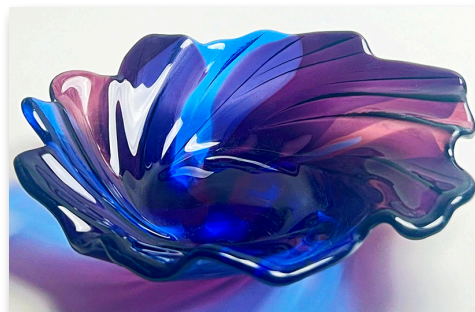
Before starting, pick three complimenting colors of compatible fusible glass. We like to use one darker color along with two lighter ones.

Refer to the photos and their captions to the right for some examples of other color combinations we've used with this technique.

All examples shown on this page use Transparent COE96 Sheet Glass. However, this process can be applied to any type of glass! Just make sure all the glass you use is fully compatible, and be aware of any possible reactivity.



Colors Used:
Steel Blue
Olive Green
Light Amber

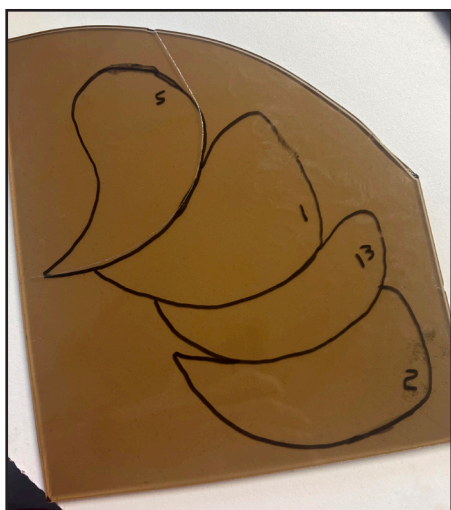


Colors Used:
Pale Blue
Chamborg
Deep Purple

Transferring the Patterns:

Once you have selected your colors, print out the patterns on **Pages 5-7**. Make sure you set your printer's options to print at 100% or "Fill Page."

Then, select which pattern you'd like to use with which color. The project photographed for this tutorial used Transparent COE96 Sheet Glass. **Pattern 1** was used with Bronze, **Pattern 2** with Champagne, and **Pattern 3** with Sea Green. The piece numbers on the patterns correspond to the numbers on the Layer Diagrams on **Page 3**.



To transfer the pattern to the glass, first lay the glass over the pattern, then trace it with Sharpie. Make sure to include the number on each piece as well for an easier time placing them later.



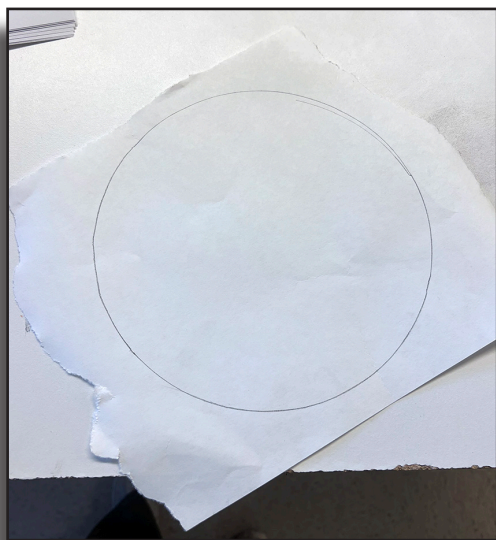
Once each piece has been marked on the glass, cut them out.



Repeat this process for each color until all pieces have been cut out, and set them aside.

*If you're doing this project with opaque glass, you can cut out the pieces from the patterns individually, place them separately on top of the glass, and trace them that way instead.

Placing the Pieces:

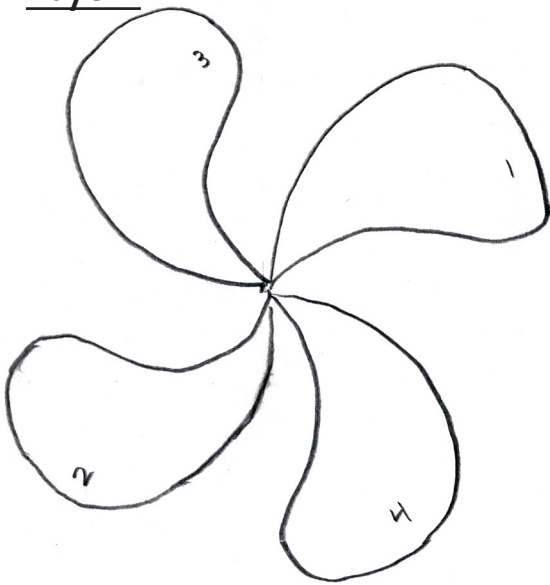


Trace a 9" diameter circle onto a sheet of Thin Fire Paper, and place it onto a kiln shelf.

This circle will help you keep your layered patterns in the proper shape.

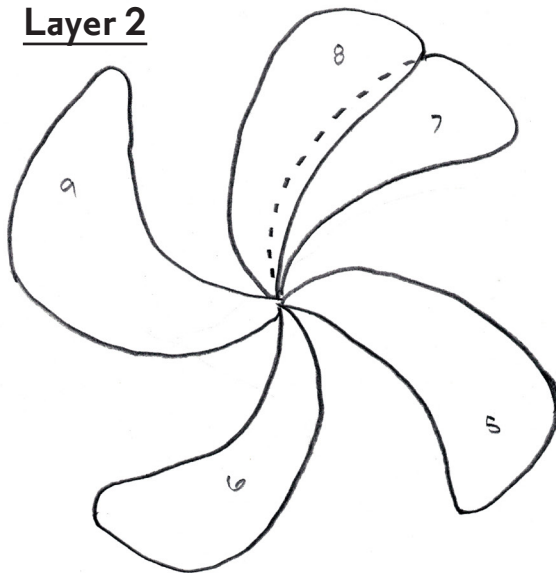
Then refer to the diagrams and photos on the following page for how to place and layer the pieces within this circle.

Layer 1



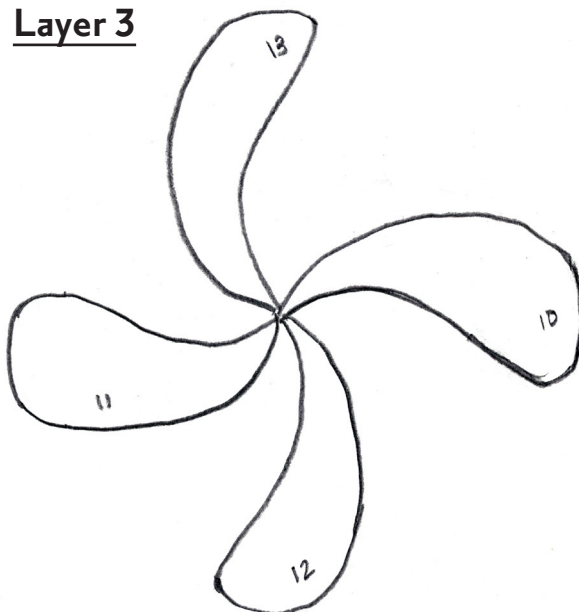
Once each piece is placed, clean any marks or numbers off the glass.

Layer 2



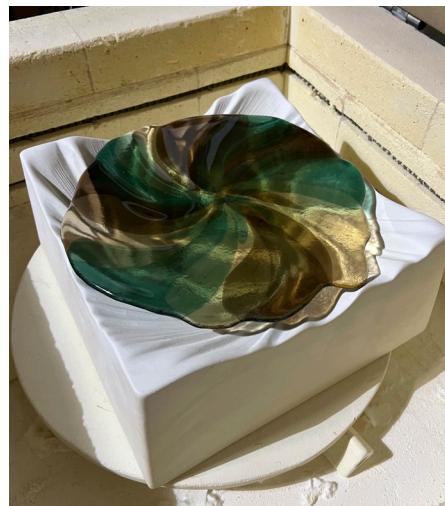
Note the dotted line indicating that piece 8 overlaps piece 7.

Layer 3



For a larger version of the three layer patterns, [click here](#).

Finishing and Firing:



For extra stability and additional points of visual interest, add a few nipped pieces of each color to the center.

Gently transfer the shelf with the glass to the kiln and fire according to the schedule in **Table 1** or your own preferred Full Fuse schedule.

Once the blank has cooled, center it on the GM276 Tornado that has already been prepared with separator and fire it to a Deep Slump using the schedule in **Table 2** or your own favorite Slump.

Table 1: Full Fuse

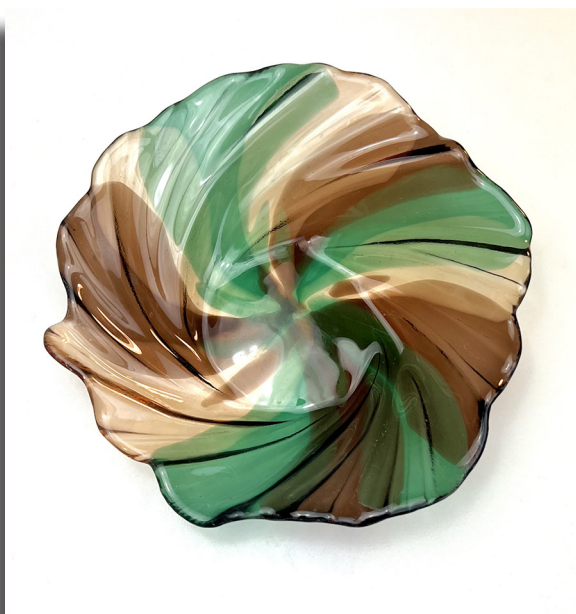
Segment	Rate	Temp (°F)	Hold
1	350	1150	60
2	50	1300	30
3	350	1465	10
4	9999	950*	90

*If using COE90 Glass, adjust this temperature to 900°F

Table 2: Slump

Segment	Rate	Temp (°F)	Hold
1	275	1250	45
2	150	1315	15
3	9999	950*	90

*If using COE90 Glass, adjust this temperature to 900°F



Featured Mold:



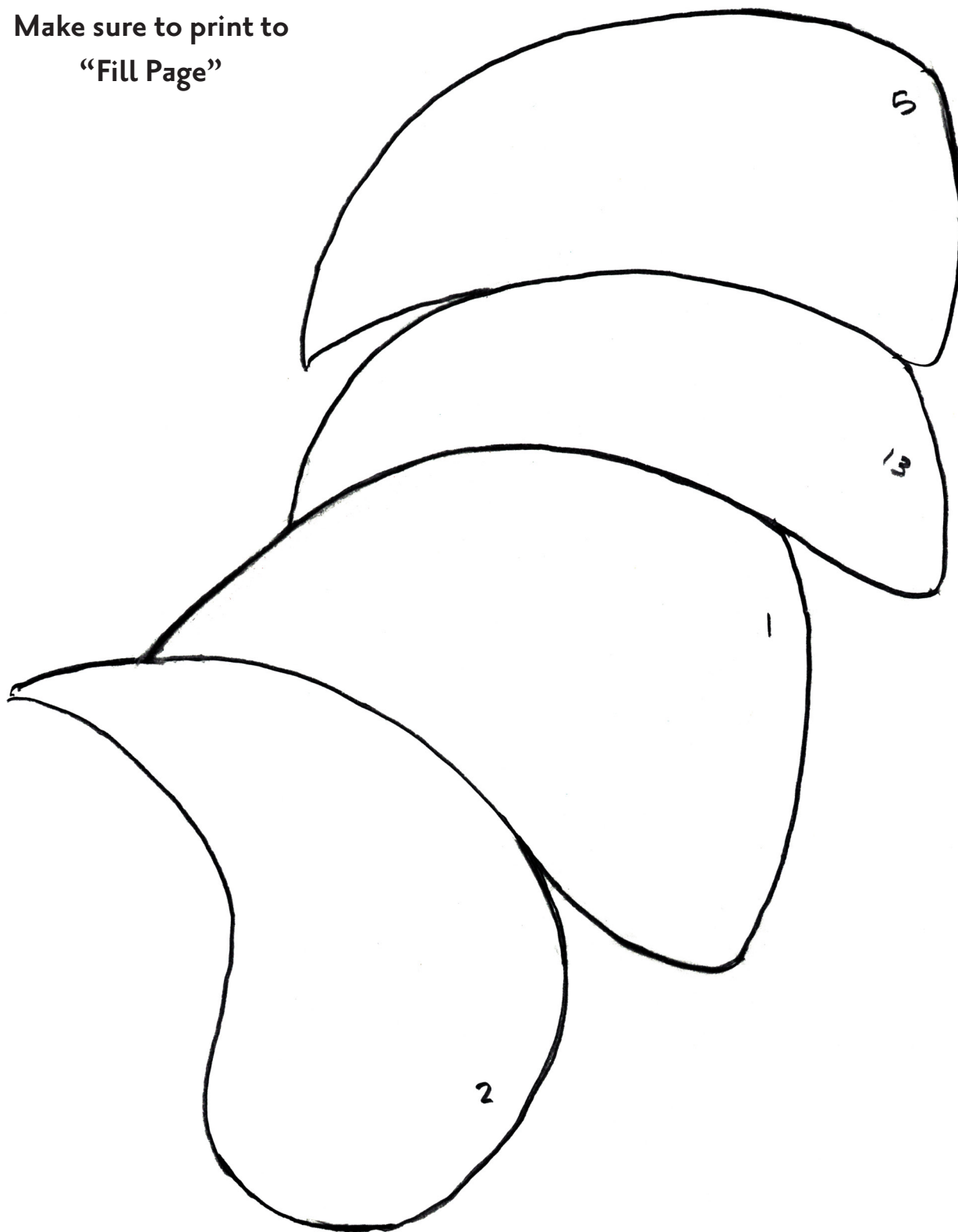
GM276 Tornado

Mold Size:
9" L x 9" W x 4.5" T

This technique isn't only for the Tornado! Give it a try with the GM257 Cyclone for a clockwise spiral twist.

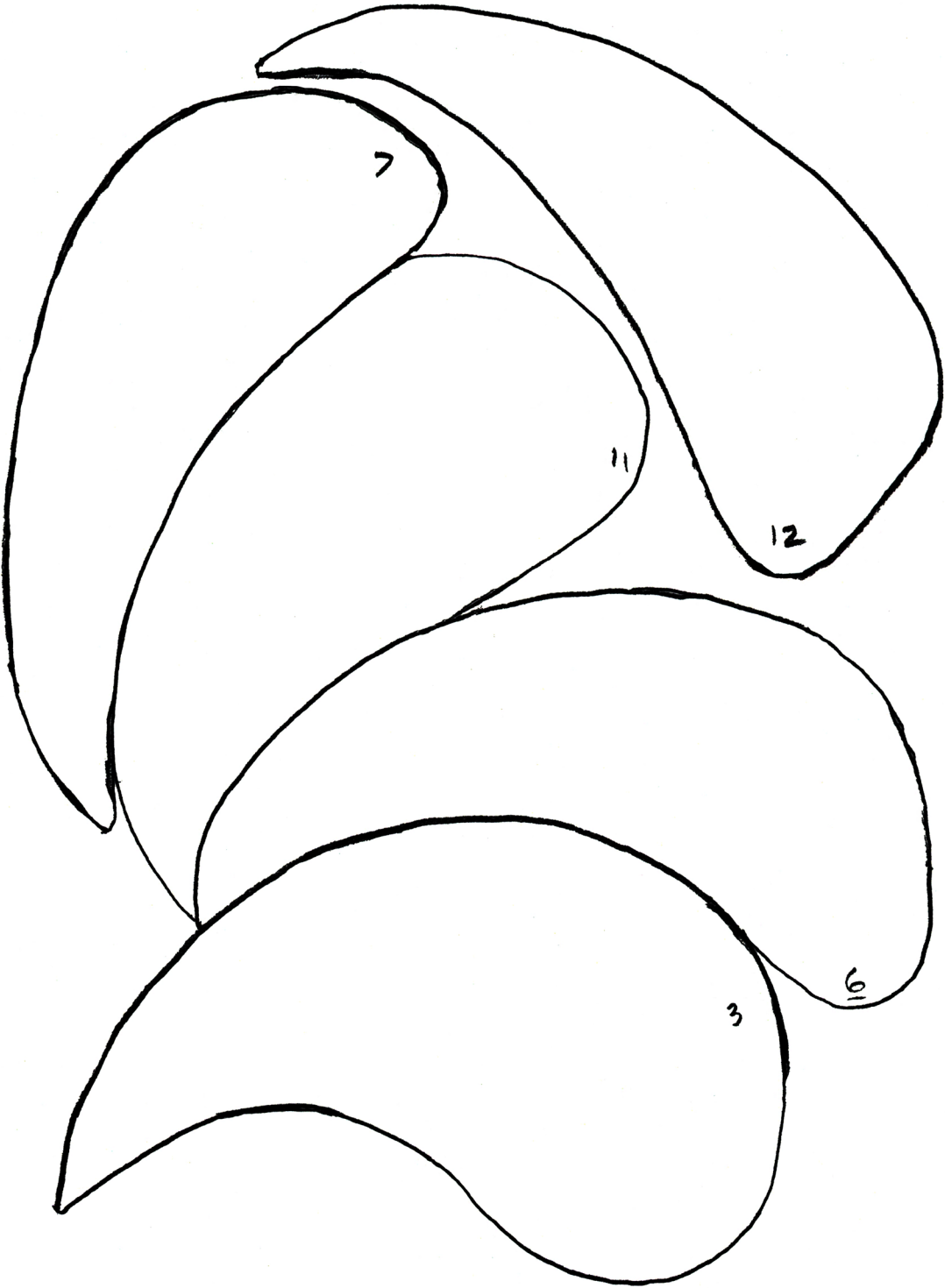
Pattern 1

Make sure to print to
"Fill Page"



Pattern 2

Make sure to print to
"Fill Page"



Pattern 3

Make sure to print to
"Fill Page"

