

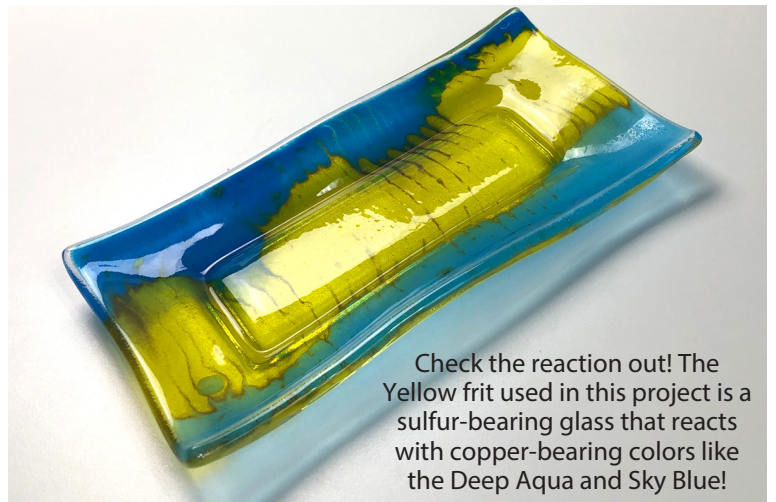
FOOTED WAVE SLURRY TRAY

Creative Paradise Inc.

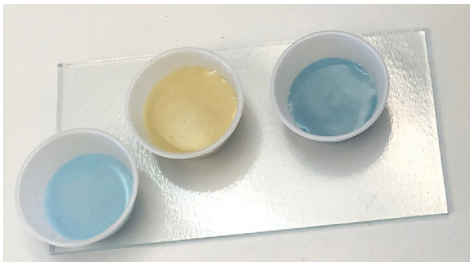
MATERIALS:

- GM248 Large Footed Wave Slump
 - COE96 Frits (See Right)
 - COE96 Double Thick Clear Sheet
 - Suitable Glass Separator/ZYP
 - Frit Slurry Supplies
- F1 Powder Frits:
 - Yellow Trans.
 - Deep Aqua Trans.
 - Sky Blue Trans.

Prepare your mold well with glass separator before adding any glass. And always wear a mask when using spray- on separators and/or powder frits!



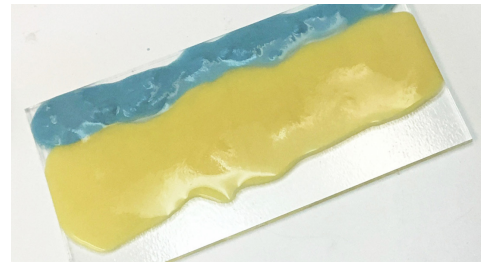
Check the reaction out! The Yellow frit used in this project is a sulfur-bearing glass that reacts with copper-bearing colors like the Deep Aqua and Sky Blue!



Create a slurry with roughly 2 tbsp of each of the three frit colors. [Click here for our Basic Frit Slurry Tutorial](#) on how to do this!



Cut and clean a 4.25" x 8.25" rectangle of the Clear and place a horizontal stripe of the Yellow slurry in the center.



Add a stripe of the Deep Aqua slurry to one side of the Yellow.



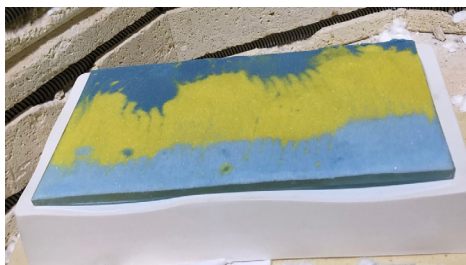
Place a stripe of the Sky Blue slurry on the other side of the Yellow.



Gently shake the glass a bit to evenly distribute and smooth the slurries.



Use a fork or similar tool to gently drag between the slurries in a vertical direction. Drag from the Sky Blue through the Yellow and into the Deep Aqua for one stroke, then change orientation and drag from the Deep Aqua through the Yellow and into the Sky Blue for the next. Continue alternating strokes in this manner until you reach the end of the sheet.



Once your slurry is dry, center it on the primed and prepared GM248 with the slurry face-up and fire using the suggested One-and-Done schedule in **Table 1**.

Table 1: One-and-Done*			
Segment	Rate	Temp (°F)	Hold
1	275	1150	20
2	50	1330	30
3	450	1420	10
4	9999	950**	90
5	100	500	00

**If using COE90, adjust this to 900°F

*Before firing, it's important to know your kiln. For tips on how to do that, [please click here to see our Important Firing Notes!](#)

Once you're happy with your slurries, clean off any excess from the sides and bottom of the glass and set it aside to dry. This typically takes a few hours.