

Haunted House Luminary

Creative Paradise Inc.

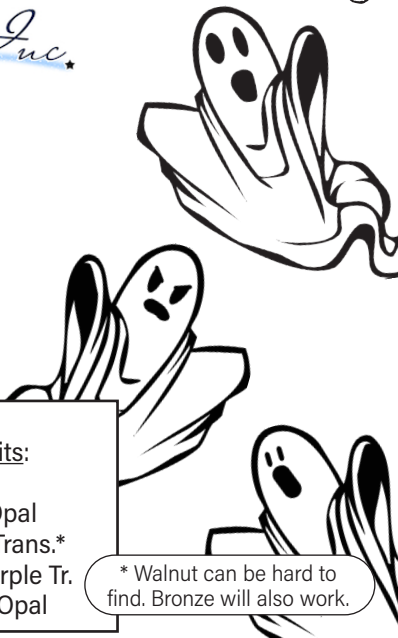
Materials:

- [DT46 Haunted House Texture](#)
- [GM28 Large Cylinder Drape](#)
- [LBGM28 Lamp Base Kit](#)
- COE96 Glass (See Below)
- Suitable Glass Separator/ZYP
- Frit Placement Tools
- Glass Cutting Supplies
- 1/2" Kiln Posts

Suggested Glass:

- | | |
|-------------------|--------------------|
| - F1 Powder Frit: | - F2 Fine Frits: |
| - Chestnut Opal | - Black |
| - Sheet Glass: | - Yellow Opal |
| - Pale Purple | - Walnut Trans.* |
| - Transparent | - Light Purple Tr. |
| - White | - Orange Opal |

* Walnut can be hard to find. Bronze will also work.



Example 1

Before You Begin:

- Prime the molds well with suitable glass separator before beginning. We recommend spray-on ZYP.
- Always wear a mask when applying spray-on separator or using powder frits.
- You know your kiln best- adjust any schedules as needed. For more, [check our Important Firing Notes here](#).
- Contact us at creativeparadiseinc@live.com with any questions.

Image 1



Fill trees and windows with F2 Black. Sprinkle a bit more around the bases of the trees and steps to the house as well.

Make sure to fill the letters on the gravestone and the bats in front of the moon as well.

If desired, add some F2 Yellow Opal to the corner of one of the windows to make it appear lit.

Image 2



Decide what part of the design you would like to feature and cut the sheet glass accordingly.

An 8.5" x 8" piece of Pale Purple Trans. was used here to showcase the above area. It was then backed with White sheet glass of the same size.

To avoid bubbles, pre-fuse the two sheets to a Full Fuse using your preferred schedule or the suggested one found in **Table 1 on Page 2**.

Image 3



Clear the frit from the areas the sheet glass won't cover to give yourself a defined workspace.

Sprinkle the house lightly with F1 Chestnut Opal.

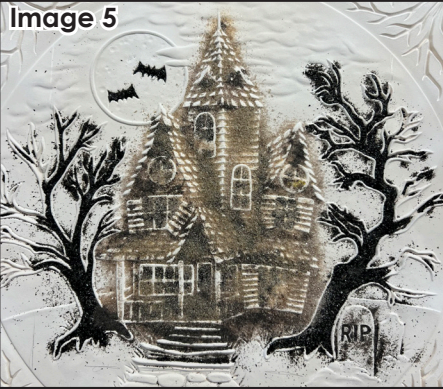


Image 4



Back the F1 Chestnut with F2 Walnut or F2 Bronze, filling in empty spaces but still leaving texture exposed for light to shine through.

Image 5



Use F2 Black to fill in more details and shadows such as the spaces under the eaves and the steps by the door.

Image 6



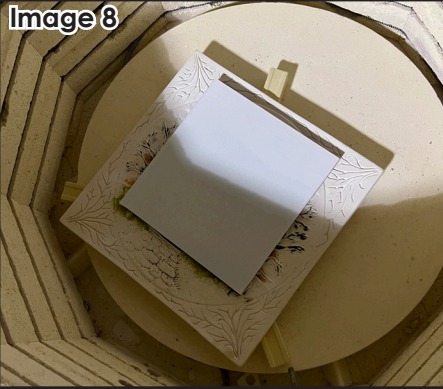
Fill the moon with F2 Yellow Opal, making sure not to completely cover up the bats. Clear away any extra frit that falls outside the moon.

Image 7



Add detail and depth by sprinkling small amounts of F2 Light Purple and F2 Orange Opal here and there in the sky.

Image 8



Elevate the primed mold on 1/2" Kiln Posts on a level shelf in the kiln. Place your pre-fused glass on top, making sure it's over the area you wanted to feature.

Fire using the suggested schedule in **Table 1** or your own preferred Full Fuse.

Image 9



Once the glass is cool, remove it from the kiln. Place the primed GM28 Drape on a level shelf in the kiln and center the cooled glass on top, texture side up.

Fire using the suggested schedule in **Table 2** or your own favorite Drape.



Table 1: Full Fuse*

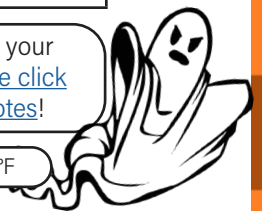
Seg.	Rate	Temp (°F)	Hold
1	275	1150	20
2	50	1300	20
3	350	1465	05
4	9999	950**	60

Table 2: Drape*

Seg.	Rate	Temp (°F)	Hold
1	275	1275	15
2	9999	950**	90

*Before firing, it's important to know your kiln. For tips on how to do that, [please click here to see our Important Firing Notes!](#)

**If using COE90, adjust these to 900°F



Example 1



Once the glass has fully cooled after draping, it can be displayed on the **LBM28** Lamp Base.

Sometimes the finished piece can be uneven. If you find the glass isn't sitting flat on the base, use a dot of hot glue to anchor it.

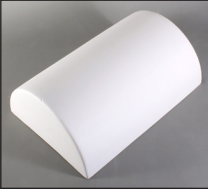
For an additional touch, paint the base to better match your glass. For more on using and decorating ceramic lamp bases, [check out our Basic Guide here](#).

Use the cord and bulb included in the **LBM28** Kit for a result like **Example 1**.

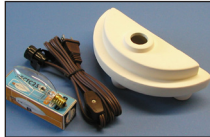
Featured Molds:



[DT46 Haunted House](#)
Mold: 12" x 12"
Diagonal: 17"
Center Circle: 10" Dia.



[GM28 Lg Cyl. Drape](#)
Mold: 9" x 6" x 3"



[LBM28 Lamp Kit](#)
Base: 7.25" x 3.5" x 2"

Try using another light source in place of the included bulb for a different look!

Example 2 uses the same glass as **Example 1**, but the bulb has been switched out for blue blinky lights.



Example 2



Example 4

The final draped piece can also stand on its own without the base.

Example 3 is shown placed in front of a candle.



Example 3

Don't just limit yourself to luminaries!
Try slumping or draping on other molds.

Example 4 is a 10.75" circle slumped on the [GM263 Hi-Lo](#) using the same schedules and techniques.