

Mermaid Fountain

Creative Paradise Inc.



Materials:

- Mermaid Bowl from [This Tutorial](#)
- [LF149 Starfish & Seahorse](#)
- [LF150 Shells & Coral](#)
- [GM149 Round Drape](#)
- [GM183 Small Round Dam](#)
- COE96 Glass (See Below)
- Suitable Glass Separator (Spray-On ZYP Suggested)
- Frit Placement Tools
- Diamond 1/4" Core Drill Bit
- 1/4" Inside Diameter Vinyl Tubing
- Submersible 50 GPH Fountain Pump
- 0.17" Diameter Vinyl Tubing

Suggested Glass:

- F1 Powder Frits:
 - Plum Opal
 - Mauve Opal
 - Medium Amber Trans.
 - Peacock Green Opal
- F1 Powder Frits (con't):
 - Orange Trans.
 - Yellow Trans.
 - Blue Topaz Trans.
 - Moss Green Trans.
- F2 Fine Frits:
 - Almond Opal
 - Cloud Opal
 - Champagne Opal
 - Medium Amber Trans.
- F2 Fine Frits (con't):
 - Ivory Opal
 - Pale Blue Trans.
 - F3 Medium Frit:
 - Almond Opal

Refer to the [Colorful Mermaid Bowl Tutorial here](#) to make the fountain base.

Prepare all molds with suitable glass separator before adding any glass. We recommend spray-on ZYP. Always wear a mask when applying spray-on separator or using powder frits.

Begin with a layer of F3 Almond in the bottom of a treated GM183 Dam Mold. Sprinkle a mixture of F2 Almond, F2 Cloud, and F2 Champagne atop this layer until the mold is about 1/4" full or holding 100 grams. Sprinkle a bit of F2 Medium Amber on top, concentrating it around the outer edge of the mold (**Image 1**).

Add stripes and details to the shells in a primed LF150 using F1 Plum Opal, F1 Mauve Opal, and F1 Medium Amber (**Image 2**). Back some of the shells with F2 Ivory and others with F2 Champagne until all are about 1/4" full of frit (**Image 3**).

Add color to the seahorses in a primed LF149 with F1 Peacock Green, F1 Orange Trans., F1 Yellow Trans., and F1 Blue Topaz (**Image 4**). Back both seahorses with F2 Pale Blue until each is around full 1/4" of frit (**Image 5**).

Add color and detail to the starfish using F1 Plum Opal, F1 Peacock Green, F1 Mauve, and F1 Moss Green (**Image 6**). Back the small starfish with F2 Almond and the large with F2 Champagne until each is about 1/4" full (**Image 7**).

Transfer the filled molds to a level shelf in the kiln and fire using the suggested schedule found in **Table 1** or your own preferred Tack Fire.

Table 1: Tack Fire*

Seg.	Rate	Temp (°F)	Hold
1	350	1215	20
2	50	1250	20
3	350	1365	05
4	9999	950**	60

*Before firing, it's important to know your kiln. For tips on how to do that, [please click here to see our important Firing Notes!](#)

**If using COE90, adjust this to 900°F



Image 1



Image 2



Image 3



Image 4



Image 5

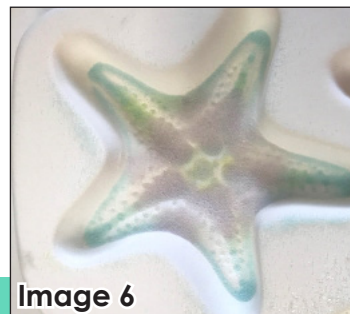


Image 6



Image 7



Image 8

Once the castings cool, gently de-mold and rinse them of any residual glass separator (**Images 8 & 9**).

Place a treated GM149 Drape on a level shelf in the kiln and center the fused disk created in the GM183 on top (**Image 10**). Fire using the schedule found in **Table 2** or your own preferred Slumping schedule.



Image 10

Use a Diamond 1/4" Core Drill Bit in water to drill a hole in the center of the two starfish and the mound of "sand" created on the GM149. **Make sure to wear proper respiratory protection.**



Image 9

Seg.	Rate	Temp (°F)	Hold
1	275	1215	45
2	50	1250	10
3	9999	950**	90

*Before firing, it's important to know your kiln. For tips on how to do that, [please click here to see our Important Firing Notes!](#)

**If using COE90, adjust this to 900°F

Constructing the Fountain:

Cut a 1.25" piece of 1/4" ID Vinyl Tubing so one end is at a slight angle. Moisten the angled end with a bit of water and slide it onto the Pump. Thread the Vinyl Tube through the center hole in the sand mound (**Image 11**).



Image 11

Place the larger starfish onto the Vinyl Tube directly on top of the sand mound (**Image 12**).



Cut a 0.25" thick portion of the 0.17" Dia. Vinyl Tube and slide it onto the 1/4" ID Tubing protruding from the starfish. This small section serves to add space between the two starfish and is optional (**Image 13**).



Image 12

Slide the smaller starfish onto the 1/4" ID Vinyl Tubing and trim any excess if necessary (**Image 14**).

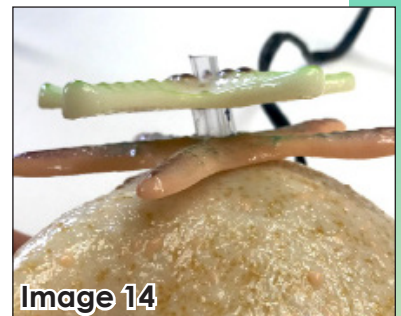


Image 14

Place the pump-sand-starfish arrangement into the center of the colorful mermaid bowl, arrange the seahorses and shells around the sand as desired, then

fill the bowl with about 2" of distilled water (**Image 15**). Make sure your hands and the surrounding area are dry then plug in the Pump.



Image 15

Take care to keep the pump submerged in water whenever it is running, and add water as needed to keep the level above the pump intake.

