

Oh How Tweet!

Creative Paradise Inc.



Example 1: GM01

Materials:

- LF80 Birds/Twig
- GM01 Square Slump
- GM05 Rectangle Slump
- COE96 Glass (See Below)
- Suitable Glass Separator (ZYP Recommended)
- Frit Placement Tools
- Kiln Shelf Paper
- Glass Cutting Supplies



Example 2 : GM05

Suggested Glass:

- | | | |
|-----------------------|------------------|----------------------------------|
| - F1 Powder Frits: | - F2 Fine Frits: | - Sheet Glass: |
| - Black | (All Opal) | - Riviera Blue |
| - Orange Opal | - Alpine Blue | - Black Frit/Streamers on White* |
| - Cobalt Trans. | - Turquoise Blue | - Clear with Green/Blue/ Purple |
| - Mauve Opal | - Khaki | Fractured Streamers* |
| - Medium Blue Opal | - Terra Cotta | |
| - Chestnut Opal | | |
| - Medium Amber Trans. | | |

Treat the molds well with suitable separator before beginning. We recommend spray-on ZYP for best results.

Always wear a mask when applying spray-on separator or working with powder frits.

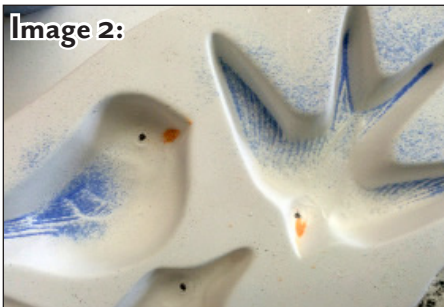
***NOTE:** These sheet glasses have been discontinued since the creation of this tutorial and may now be difficult to find. Other COE96 sheet glass can be used following all the same methods.

Image 1:



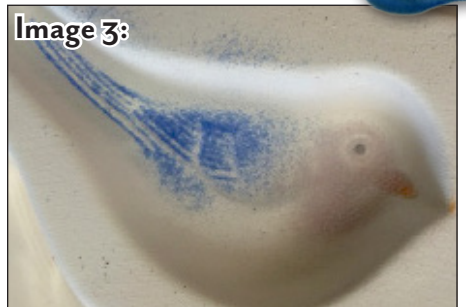
Once the separator is dry, begin filling the LF80 by placing F1 Black into the birds' eyes and deepest detail areas of the twig.

Image 2:



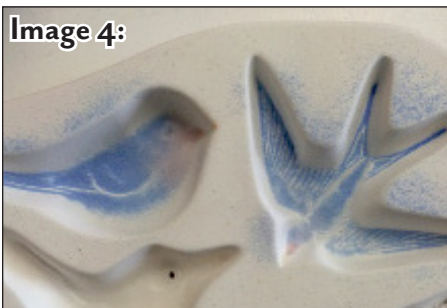
Add F1 Orange Opal to the birds' beaks and sprinkle F1 Cobalt around the edges of the tails and wings of the top sitting and flying birds.

Image 3:



Sprinkle F1 Mauve Opal around the head and throat area of the top sitting bird.

Image 4:



Add F1 Medium Blue Opal to the top sitting and flying birds. Leave the belly of the sitting bird and most of the raised details of each bird exposed.

Image 5:



Fill the top sitting bird with F2 Alpine Blue Opal until roughly 1/4" full. If using fill weights, this is about 16 grams of frit.

Image 6:



Fill the flying bird with F2 Turquoise Blue Opal until roughly 1/4" full. If using fill weights, this is around 22 grams of frit.

APPROX CONVERSION:

1/4" = 0.64 cm

Image 7:



Add F1 Black to the eye, chest, and tail and wing tips of the bottom bird. Sprinkle F1 Chestnut Opal along the head and back and add F1 Orange Opal to the beak. Use a small brush to clear a thin line by the eye.

Image 8:



Place a thin layer of F1 Medium Amber over the entire sitting wren. Use a small brush to preserve the line next to the eye and add a line above the belly.

Image 9:



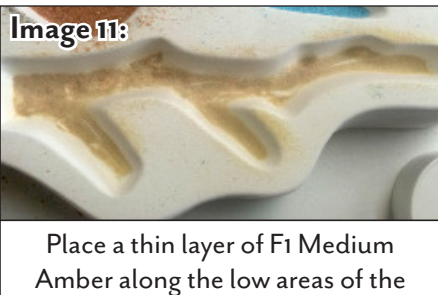
Add F2 Khaki Opal into the head and belly areas.

Image 10:



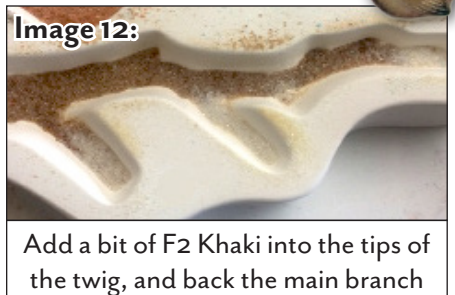
Fill the wren with F2 Terra Cotta until roughly 1/4" full. If using fill weights, this is about 17 grams.

Image 11:



Place a thin layer of F1 Medium Amber along the low areas of the twig. Leave the higher texture lines uncovered.

Image 12:



Add a bit of F2 Khaki into the tips of the twig, and back the main branch area with a layer of F2 Terra Cotta.

Image 13:



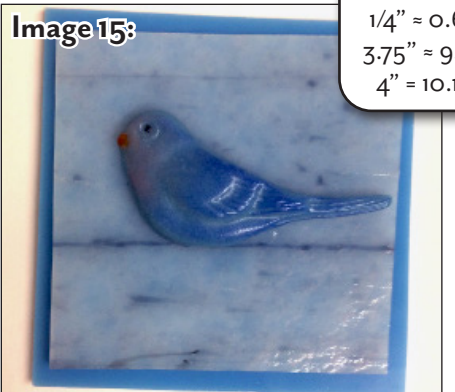
Fill the branch with F2 Chestnut until roughly 1/4" full. If using fill weights, this is about 43 grams of frit. Transfer the filled mold to a level shelf in the kiln and fire using the suggested schedule in **Table 1** or your own preferred cooler tack fire.

Image 14:



Allow the mold to cool naturally after firing, and de-mold by inverting onto a soft surface. Clean off any residual separator.

Image 15:



For the GMO1 dish (**Example 1, Page 1**), cut a 3.75" square of Black Frit/Streamers on White glass so that a streamer runs along the center of the glass. Cut a 4" square of Riviera Blue and center the Frit/Streamers square on top with the vivid side facing down. Place the bird along the faded Black streamer in the center of the square.

APPROX CONVERSIONS:
1/4" = 0.64 cm
3.75" = 9.53 cm
4" = 10.16 cm

Table 1: Tack Fire Frit Castings *

| Seg. | Rate | Temp (°C) | Hold |
|------|------|-----------|------|
| 1 | 167 | 657 | 30 |
| 2 | 194 | 749 | 05 |
| 3 | Full | 510** | 60 |

**If using COE90, adjust this to 482°C

*Before firing, it's important to know your kiln to see if you need to adjust our suggested schedules. For tips on how to do that, [please click here for our Important Firing Notes!](#)

www.creativeparadiseglass.com

Creative Paradise Inc.

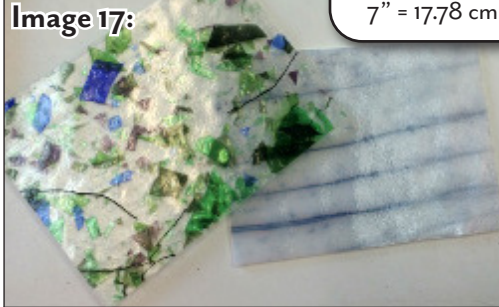
CONVERSIONS:

5" = 12.7 cm

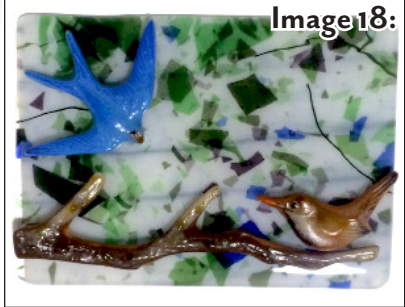
7" = 17.78 cm

Image 16:

Transfer the glass onto a suitably sized sheet of kiln shelf paper on a level shelf in the kiln and fire using the suggested schedule in **Table 2** or your own preferred tack fire. It is also possible to pre-fuse the sheet glass together and tack fire the bird in place later, as shown in the "Fuse Together" box below.

Image 17:

For the GMO5 tray (**Example 2, Page 1**), cut a 5" x 7" rectangle of Black Frit/Streamers on White and a 5" x 7" rectangle of Clear with Streamers. Place the vivid side of the Frit/Streamers down onto a suitably sized sheet of kiln shelf paper on a level shelf in the kiln. Place the textured side of the Clear Streamer glass facing down on top of the Frit/Streamers and fire using the suggested schedule in **Table 3** or your own preferred full fuse.

Image 18:

After the glass has cooled, arrange the branch, flying bird, and wren on the rectangle as desired and fire using the suggested schedule in **Table 2** or your own preferred tack fire.

Table 2: Tack Fire Castings to Glass *

| Seg. | Rate | Temp (°C) | Hold |
|------|------|-----------|------|
| 1 | 111 | 260 | 20 |
| 2 | 111 | 657 | 30 |
| 3 | 28 | 676 | 20 |
| 4 | 194 | 766 | 05 |
| 5 | Full | 510** | 90 |
| 6 | 56 | 260 | 05 |

Table 3: Full Fuse

| Seg. | Rate | Temp (°C) | Hold |
|------|------|-----------|------|
| 1 | 111 | 657 | 45 |
| 2 | 28 | 676 | 20 |
| 3 | 167 | 796 | 05 |
| 4 | Full | 510** | 90 |
| 5 | 56 | 260 | 05 |

Table 4: Slump

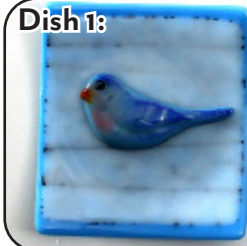
| Seg. | Rate | Temp (°C) | Hold |
|------|------|-----------|------|
| 1 | 167 | 682 | 20 |
| 2 | Full | 510** | 90 |

*Before firing, it's important to know your kiln to see if you need to adjust suggested schedules for your use. For tips on how to do that, [click here for our Important Firing Notes!](#)

**If using COE90, adjust these to 482°C

Image 19:**Image 20:**

Center the square on the primed GMO1. Center the rectangle on the primed GMO5. Place both on a level shelf in the kiln and fire using the suggested schedule in **Table 4** or your own favorite slump.

Fuse Together or Fuse Separate?**Dish 1:****Dish 2:**

Dish 1 was created by full fusing the base sheet glass together **before** tack firing the bird on. **Dish 2** tack fired the base glass and bird **together** in a single firing.

Fusing separately creates a smoother dish while fusing together preserves the definition between the sheet glass pieces.

Choose according to your own artistic preference!

Creative Paradise Inc.

For more information, tutorials, and molds, visit our website: www.creativeparadiseglass.com