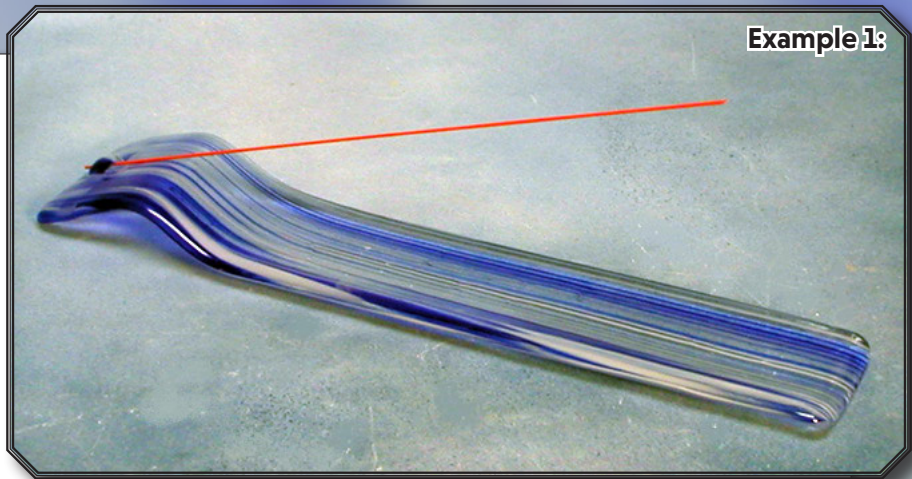


# Incense Burner

*Creative Paradise Inc.*

## Materials:

- GM07 Incense Burner Slump
- Fusible Compatible Sheet Glass
- Suitable Glass Separator/ZYP
- Glass Cutting Tools
- 1/8" Thick Fiber Paper
- Kiln Shelf Paper



Example 1:

## Preparing the Materials:

Begin by preparing the mold with suitable glass separator. We recommend spray-on ZYP. **Always wear a mask when applying spray-on separator.**

Cut and clean the following pieces from your choice of fusible compatible sheet glass colors:

- Two 2.5" x 11.5" rectangles
- One 0.25" x 2.5" rectangle

Cut an additional 0.5" long piece of 1/8" fiber paper.

### APPROX.

#### CONVERSIONS:

- 1/8" ≈ 0.32 cm
- 0.25" ≈ 0.64 cm
- 0.5" = 1.27 cm
- 1" = 2.54 cm
- 2.5" = 6.35 cm
- 11.5" = 29.21 cm



Image 1:

## Assembly and Firing:

Begin by stacking the two larger rectangles of glass on top of one another. Place the strip of fiber paper lengthwise about 1" in from the edge of the top layer of the stack., then place the smaller rectangle of glass perpendicularly across the top of the fiber paper (Image 2).

Other compatible decorative glass elements such as frit, stringers, dichroic pieces, or nipped rods or noodles can be added at this point if desired.

Transfer the project to a suitably sized sheet of kiln shelf paper on a level shelf in the kiln and fire using the suggested schedule in **Table 1** or your own preferred full fuse.

Leave the fiber paper in place after fusing. Make sure the separator on the GM07 is completely dry before centering the fused glass on top with the fiber paper end over the raised portion of the mold. Transfer back to a level shelf in the kiln and fire using the suggested schedule in **Table 2** or your own favorite gentle slumping schedule.

Once the glass has cooled, dislodge the fiber paper with a toothpick or similar small, pointed tool. Any residual glass separator can be rinsed off with running water and a stiff-bristled (but not wire) brush.

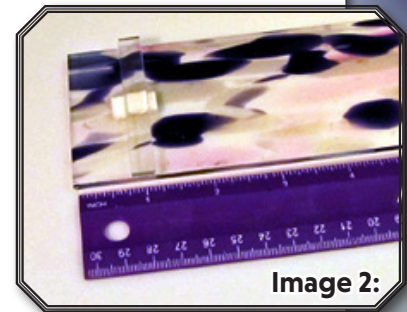


Image 2:

**Table 1: Full Fuse \***

Seg.	Rate	Temp (°C)	Hold
1	167	621	45
2	83	704	20
3	222	793	10
4	Full	510**	60
**If using COE90, adjust this to 482°C			

**Table 2: Slump \***

Seg.	Rate	Temp (°C)	Hold
1	167	677	15
2	Full	510**	60
**If using COE90, adjust this to 482°C			

\*Before firing, it's important to know your kiln to see if you need to adjust suggested schedules. For tips on doing that, [click here for our Important Firing Notes!](#)

For more information, tutorials, and molds, visit our website:

[www.creativeparadiseglass.com](http://www.creativeparadiseglass.com)