

DT45 Dreamcatcher Tips and Tricks *CreativeParadise Inc.*



Example done on the concave side without glass backing. Also features LF228 Feathers

Since the DT45 is a double-sided mold, there are numerous possible projects! In this short guide we'll give some helpful tips on how to use this versatile mold.

Mold featured in this guide:
- [DT45 Dreamcatcher](#)

General Tips Before You Begin:

- ZYP Boron Nitride spray is the best primer for our molds.
- When priming, especially for the first time, spray from multiple angles to make sure all of the mold is covered.
- Always allow your primer ample time to dry before firing.
- When adding frit, make sure to disturb your primer as little as possible.
- Make sure you know your kiln! If you know your kiln runs hot or cold, adjust all firing schedules accordingly.
- Email us at creativeparadiseinc@live.com if you have questions!

Frit Placement Tips:

(Always remember to properly prime with your molds with glass separator)



Fine frit of any color or translucency works best on both sides of this mold (example on left).

Two tools that we often use for precise frit placement are a Conical Sifter (top right), and a Plastic Eyedropper with both the bulb and tip cut (bottom right).



For the convex side, where the lines are raised, you can work with frit either inside the spaces created by the mold, outside the outer ring of the mold, or both, as shown in the top right piece.

For frit inside the lines, make sure you have enough. You want the spaces full, but not overflowing (top left photo).

For frit outside the ring, you can either pack it tightly next to the ring for a clean outer line, or you can feather it out for a more watercolor look (bottom two photos).



Example done on convex side with square clear glass backing and frit



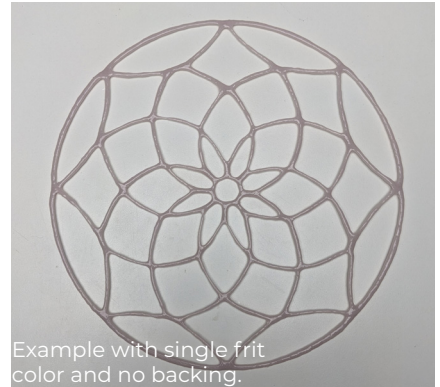
Frit Placement Tips:

For the concave side of the mold, there are two options. You can use just frit, like the example to the immediate right, or you can back the frit with a square or 9"-10" circle of glass, like example to the far right.

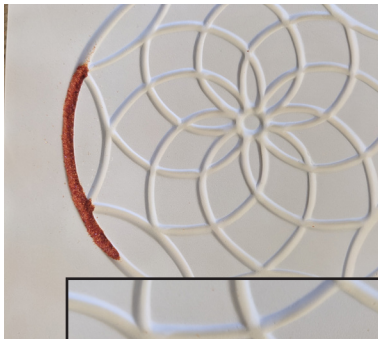
If you're backing with a circle of glass, make sure to keep your lines clean! A small, dry brush or a small vacuum (such as an earwax vacuum), can be very helpful here.



Example with assorted frit on clear circle back.



Example with single frit color and no backing.



For actual placement of the frit, regardless of backing, make sure your lines are completely full, as in the examples to the left.

You want to double-check that your lines are full and without any gaps, especially if your piece is frit-only.

The weight for a frit-only piece is about 77g. [Click here for a more in-depth tutorial on the frit-only piece featured to the right.](#)



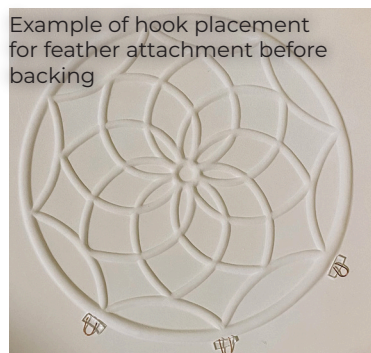
Example with assorted frit and no backing, and LF228 Feathers

Adding Hooks:

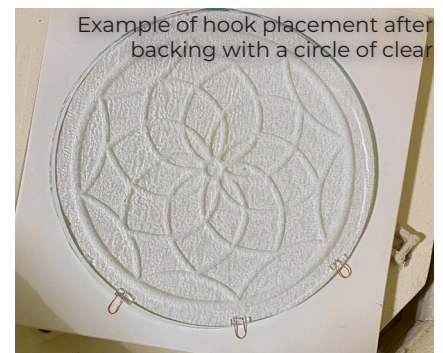
To add hooks for feathers or wall hangings, take a roughly 1" piece of nichrome or bare copper wire and bend it into a "U" shape. Then cut a roughly 1/4" by 1/8" rectangle of the same glass as your backing.

After you place your mold in the kiln but before you place your backing piece, arrange the glass rectangles along the outside ring where you would like the hooks. Refer to the two examples on the top right for suggested placement for feather attachment.

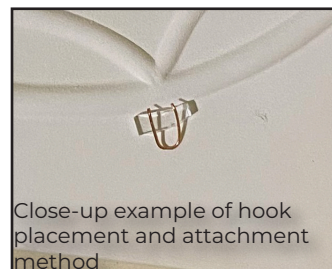
Once the glass is positioned, place your "U"s of wire so that the arms are fully on the rectangles as in the close-up photo to the bottom right. Then you may place your backing, and proceed to firing.



Example of hook placement for feather attachment before backing



Example of hook placement after backing with a circle of clear glass



Close-up example of hook placement and attachment method

Using Iridescent Glass:



If you're using iridescent glass to back a frit casting done on either side of the mold you can achieve different effects by placing it iridescent side down or iridescent side up.

If the iridescent side is away from the frit it remains smoother, as shown in the left example.

If the iridescent side is facing the frit, it creates an almost paint-like patchy effect, as seen in the right example.

Firing Schedules:

Segment	Rate	Temperature	Hold
1	275	1150	45
2	50	1280	30
3	300	1425*	10
4	9999	950**	90

Table 1 shows a schedule for a single layer of COE96 glass. All temperatures listed are in Fahrenheit.

*For a double layer of COE96, change the temperature in Segment 3 to 1455.

**For COE90 glass, change the temperature in Segment 4 to 900.

Table 2 shows a schedule for a frit-only piece without sheet glass backing.

**For COE90 glass, change the temperature in Segment 3 to 900.

Segment	Rate	Temperature	Hold
1	350	1150	15
2	375	1410	0
3	9999	950**	60

Finishing Touches:



This example used ivory frit on the concave side and backed with a pale blue circle. It also features LF228 feathers.

If you've used the convex side, once your piece has cooled you can highlight the channels in the glass with a paint pen, as seen in the example to the right.

On the convex side, you can highlight the points between lines in the same way, as in the example below.

Metallics such as gold and chrome work well for this.



Example done on convex side with assorted frit, backed with a square of champagne, and highlighted with chrome.



Example done on concave side without backing.

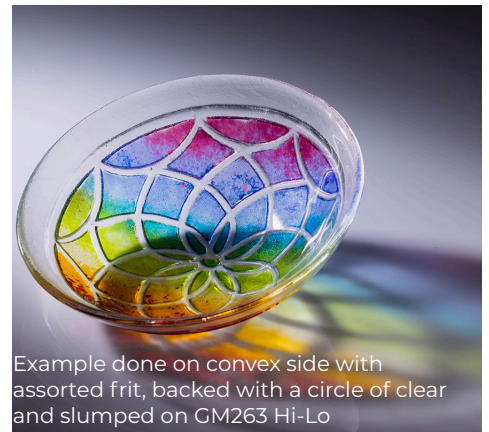
If you didn't back your frit, you can use string or rope to both hang and accessorize your piece with beads and feathers, such as in the example to the left.

If you chose to add hooks to your piece, you can use string or rope to attach feathers from our [LF228 Large Feather](#) mold, like the examples above and below.



This example used a double layer of clear glass and also features LF228

Depending on how you backed your frit, you can then slump your piece into any number of shapes. The examples on the right were slumped into our [GM263 Hi-Lo Bowl](#).



Example done on convex side with assorted frit, backed with a circle of clear and slumped on GM263 Hi-Lo

Featured Molds:



[DT45 Dreamcatcher Texture](#)
11" x 11"



[GM263 Hi-Lo Bowl](#)
10.5" Dia.

[LF228 Large Feather Trio](#)
9.5" x 7.5"



Creative Paradise Inc.