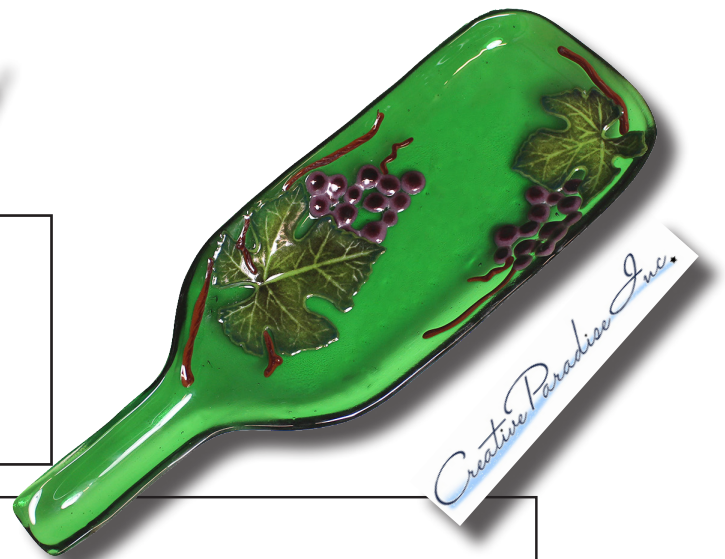


# Vineyard Inspired Tray

Create a tasteful 'faux slumped bottle' with decorative grapes, twigs and leaves!

**Materials Used:** System 96 Frits: **Leaves:** F1 Deep Aqua, F1 Amber, F2 Amazon Green, F2 Olive Opal. **Grapes:** F1 Deep Purple, F2 Lilac Opal. **Twigs:** F1 Black Cherry Opal, F2 Chestnut Brown Opal. **Glass Bottle:** System 96 Standard Clear Glass, Light Green Transparent. **CPI Molds:** [LF116 Grape Leaves](#), [LF117 Grapes and Twigs](#), [Slump Mold GM101](#). Glass Cutter, Powder Sifter, MR97/ZYP Glass Separator Spray.



## General Instructions:

Begin by treating all of the molds with a glass separator in a ventilated area.

We recommend MR97/ZYP. Several light coats with a short waiting period between coats is preferable to one heavy coat. Shake the can well before use and hold the can upright while using to assure proper distribution of product. It is important to turn the mold to make sure you coat the mold cavity at all angles. [Click here for a tutorial on applying the ZYP.](#)

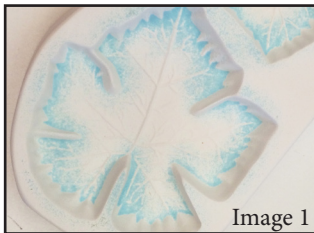


Image 1



Image 2

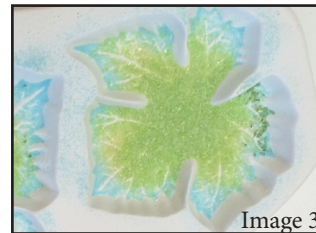


Image 3

To create LF116 Grape Leaves - Sift F1 Powdered Deep Aqua around the border of each leaf (Image 1). Sift F1 Powdered Medium Amber into the center area of each leaf (image 2). Add F2 Fine Amazon Green over the powder in the center of the leaf cavities and F2 Fine Olive Opal to the edges, in the leaf cavities (image 3), until the large leaf cavity is holding 20 grams of frit and the small leaf cavity is holding 15 grams of frit.

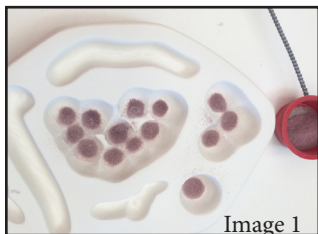


Image 1

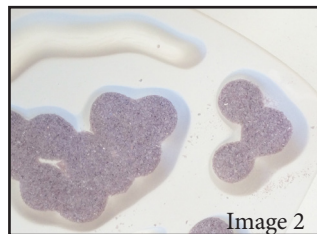


Image 2



Image 3



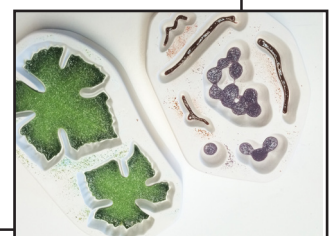
Image 4

The finished sample photographed (top left) has twice as many grapes and twigs than will cast from one grape and twig mold. Either use one mold twice or use two molds.

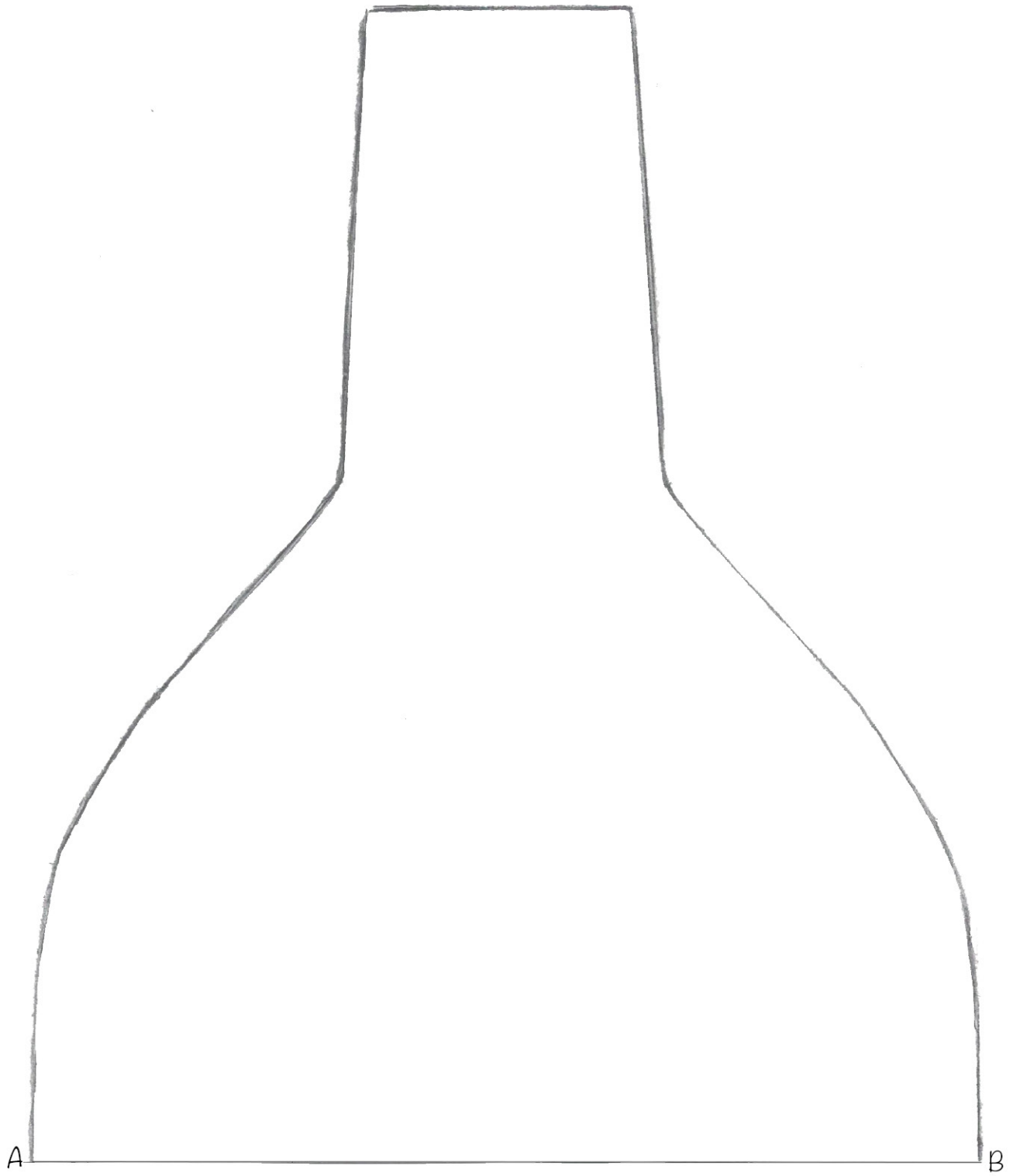
To create LF117 Grapes and Twigs - Sift F1 Powdered Deep Purple into the bottom of each grape cavity (image 1). Place F2 Lilac opal over the Deep Purple in the grape cavities (image 2). Place F1 Powdered Black Cherry Opal into the bottom of each twig cavity just to fill the deep details (image 3). Then place F2 Fine Chestnut Brown Opal over the Black Cherry Opal in the twig cavities (image 4).

The the mold should be holding a total of 25 grams. Each cavity should have about 1/4" of frit in it.

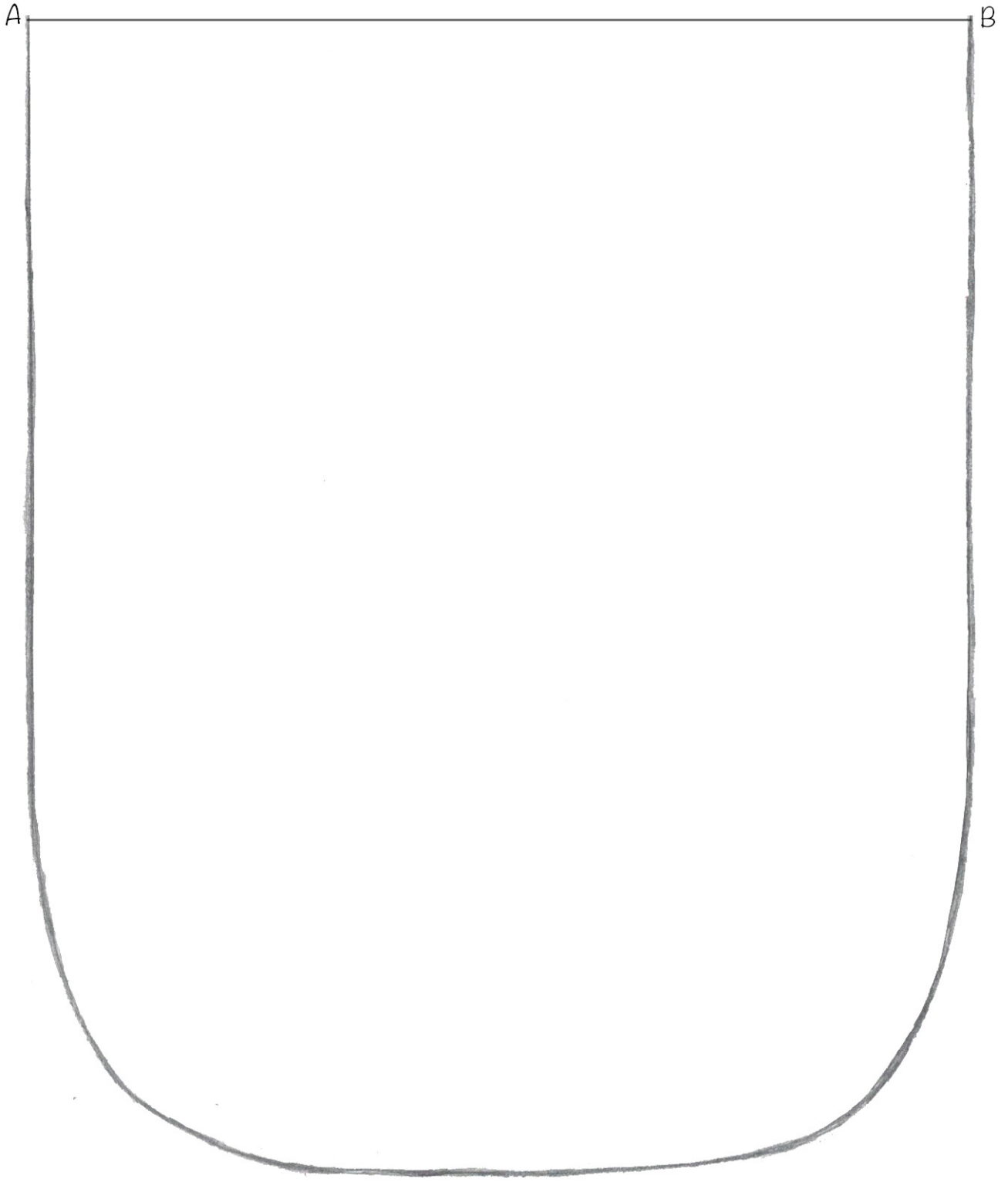
Fire the Leafs, Grapes and Twigs using the tack firing schedule found in Table 1.



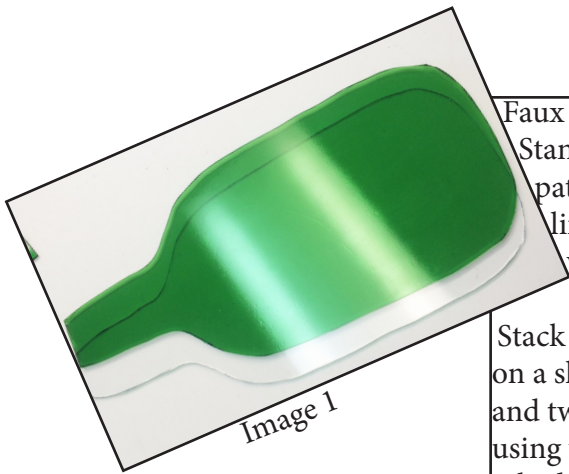
Fused Twigs and Leaves.



Print Pattern as 'Actual Size'



Print Pattern as 'Actual Size'



Faux Bottle: Cut two bottle shapes using the pattern provided, one of Standard Clear and the other of Light Green Transparent (image 1). The pattern comes in two pieces you must join A with A and B with B along the line. Make sure to choose the option 'actual size' on your printer settings when you print out the pattern.

Stack the Light Green onto the Clear and place onto a piece of kiln shelf paper on a shelf in a kiln. De-mold and clean any residual Zyp from the grapes, leaves and twigs. Arrange the grapes, leaves and twigs onto the bottle shape in the kiln using your own artistic preferences (image 2). Fire the project using the firing schedule provided in table 2.

\*\*The schedule in table 2 is a particularly long firing schedule. This is due to the size of the two pieces of glass being fused together. It is also because of the weight of the frit pieces on top of the glass, bubbles can be an issue too between the glass layers if the project is fired to quickly and without a bubble squeeze.

Please Note: adjust this temperature down if the kiln being used is known to fire hotter than the standard. The fuse should create a smooth fuse at the edge of the sheet glass and leave some dimension on the frit castings.

Segment	Rate	Temp	Hold
1	350	1390	3
2	9999	950	60

[\\*See "firing notes" to determine if this temperature is correct for your kiln](#)

Segment	Rate	Temp	Hold
1	200	700	45
2	150	1215	60
3	50	1250	60
4	200	1430**	05
5	9999	950	90
6	100	700	05

[\\*See "firing notes" to determine if this temperature is correct for your kiln](#)



Segment	Rate	Temp	Hold
1	275	1215	30
2	50	1250	10
3	9999	950	90

[\\*See "firing notes" to determine if this temperature is correct for your kiln](#)

Treat a GM101 Gently Curved Bottle slump with Zyp or Primo Primer or other quality glass separator. Place the bottle slump in the kiln on a kiln shelf. Make sure the top of the bottle is level by placing a piece of glass on the mold and a level on the piece of glass. If necessary, adjust the mold by propping little pieces of fiber paper under the mold until it is level. Place the fused glass onto the GM101 Gently Curved Bottle Slump and fire using the firing schedule provided in Table 3.

