

# LF12 Hummingbird Tutorial

*Creative Paradise Inc.*

## Materials

- [LF12 Humming Bird Mold](#)
- Suitable Glass Separator such as ZYP
- Ear Wax Vacuum (optional)
- Powder Sifters for F1 Powder Frit (optional)
- COE96 Frits used in this tutorial:
- F1 Powder: Black, Flame Opal, Deep Aqua, Moss Green.
- F2 Fine: Lemongrass Opal, Amazon Green, Cloud Opal, Turquoise Green, Sea Green.



Always wear a mask when spraying your mold with glass separator and when working with F1 Powder Frits.

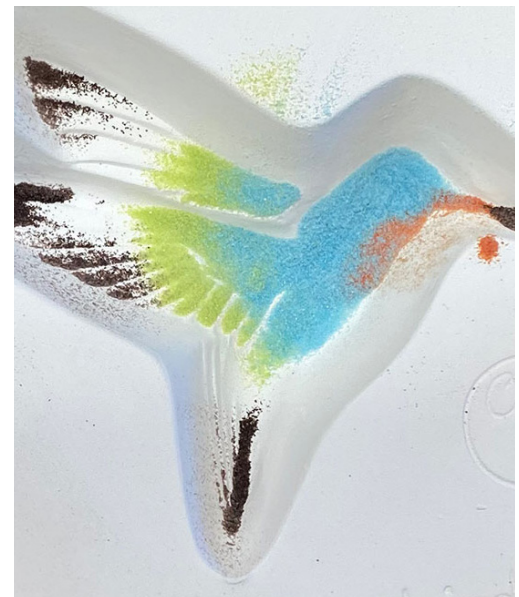
Treat your mold thoroughly with a suitable glass separator. If you are wanting to follow the fill weight (we suggest: 28 grams) weigh your mold empty before you start to add the frit. This Hummingbird should be Tack fired. See Table 1.



Sift powdered Black in the edges of the wing and tail and into the beak and eye.



Place powdered Flame Opal into the throat of the Hummingbird.



Place powdered Deep Aqua into the head and front of the Hummingbird and powdered Moss Green into the base of the wings and the back of the Hummingbird.



Place fine Lemongrass Opal frit into the base of the wings and the back of the Hummingbird.



Place fine Amazon Green into the tail, belly and back of the neck and base feathers of wing.



Place fine Cloud Opal into the tips of the wing and tail.



Fill the cavity with approx 1/4" of fine Turquoise Green frit.



Place another 1/4" of fine Sea Green frit over the Turquoise Green frit in the cavity until the frit weighs 28 grams in the mold. Fire the project to a **Tack fire**. Use your favourite tack fire schedule or ours in Table 1.

### Helpful Tips

- If this is your first time using your mold, give it a good few coats of ZYP/ suitable glass separator. Spray the mold thoroughly in every direction. Then you only need to treat it once or twice before your next firings.
- Allow the ZYP to dry before adding frit. Always be careful not to disturb the ZYP with your fingers or a tool when you are adding frit to the mold.
- When your project is done fusing and has cooled down, if the glass does not easily come out, turn the mold over on a soft surface, thump the mold on the back, and the glass should pop out safely. Never pick the stake part of the glass out of the mold with your fingers.
- If your glass sticks to the mold it either means your kiln is firing too hot and the separator is failing, or you have not applied enough glass separator/ missed a spot.
- Just like your oven at home before following a cooking recipe, always make sure you know your kiln before using our suggested firing schedule. For example: if your kiln fires too hot you may need to take some heat off our suggested top temp. A great way to find out about your kilns temps is to do some test tiles. Here is a flyer on this: [IMPORTANT FIRING NOTES FLYER](#)
- If you have any questions about using our molds please email us at: [creativeparadiseinc@live.com](mailto:creativeparadiseinc@live.com)

Segment	Rate	Temp	Hold
1	275	1150	20
2	350	1410	05
3	9999	960	60