

# Footed Garden Dish



*Creative Paradise Inc.*

## Materials:

- LF103 Daisy
- LF145 Garden Bugs
- LF186 Small Daisies & Leaves
- GM87 Plate Ring
- GM90 Foot Drape
- COE96 Frits (See Right)
- COE96 Standard Clear Sheet Glass
- Suitable Glass Separator/ZYP
- Frit Placement Tools

Before adding glass to any mold, make sure to prepare it well with suitable glass separator. We recommend using spray-on ZYP. **Make sure to wear a mask when using spray-on separators and/or powder frits!**

## Bees and Ladybugs (LF145):

Prime your mold well with separator. The caterpillar portion of this mold isn't featured in this project. For more details on this mold as well as information on how to create the ladybug spots, please refer to [the full LF145 Tutorial by clicking here!](#)

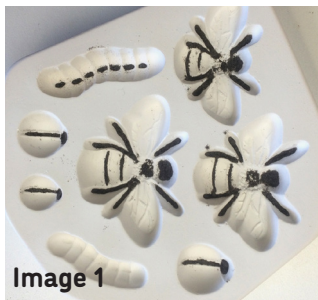


Image 1

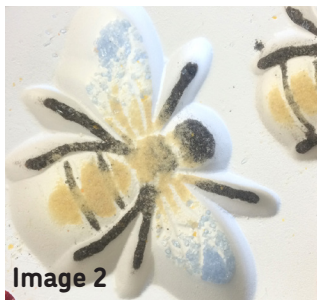


Image 2

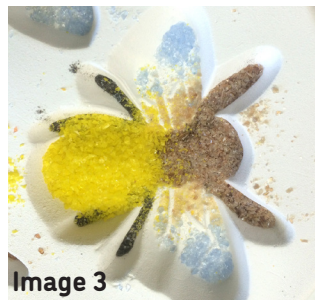


Image 3

Begin by placing F1 Black into the legs, heads, and stripes of the bees and ladybugs (**Image 1**). Add F1 Medium Amber to the bee bodies and bases of the wings, and a bit of F2 Pale Blue to the edge of the wings (**Image 2**). Cover the lower portion of the bee bodies with F2 Yellow Opal and the upper portion with F2 Chestnut Opal (**Image 3**). Back with F2 Clear until all bees are approximately 1/4" full of frit.

In advance, full fuse some F3 Black to create an assortment of spots for the ladybugs. Continue the ladybugs by adding a bit of F2 Clear (**Image 4**). Arrange some of the premade ladybug spots in the Clear (**Image 5**). Back everything with F2 Flame Opal, then fill the remainder of the cavities with either more F2 Flame Opal or F2 Clear until they're all roughly 1/4" full of frit (**Image 6**).

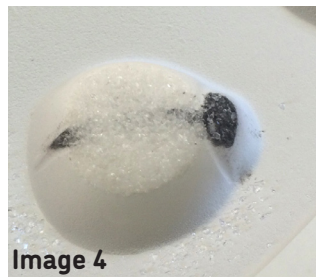


Image 4

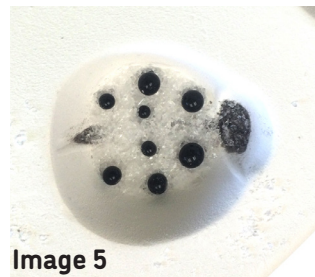


Image 5



Image 6

## Frit Colors:

- |                    |                     |
|--------------------|---------------------|
| - F1 Powder Frits: | - F2 Fine Frits:    |
| - Black            | - Pale Blue         |
| - Marigold Opal    | - Yellow Opal       |
| - Yellow Opal      | - Chestnut Opal     |
| - Teal Green       | - Clear             |
| - Pale Gray        | - Black Opal        |
| - Medium Amber     | - White Opal        |
| - Light Green      | - Fern Green Opal   |
| - Moss Green       | - Amazon Green Opal |
|                    | - Flame Opal        |
|                    | - Marigold Opal     |

Once you're happy with your bug design, place the mold in the kiln and Tack Fire using the suggested schedule in **Table 1** on **Page 2** or your own preferred Tack Fire schedule. To create the Garden Dish as shown, use the LF145 with these instructions twice to create 6 bees and 6 ladybugs.

## Daisies and Leaves (LF103 and LF186):

Prime both molds well with separator. The LF103 Daisy will be filled to its full fill weight and Full Fused to create a more substantial base for the dish while the LF186 Daisies and Leaves will be filled thinner and Tack Fired.



Image 7



Image 8



Image 9



Image 10



Image 11



Image 12

### For the Daisies:

These instructions apply to the daisies in **both** molds.

Begin by adding F1 Marigold Opal to the centers (**Image 7**). Place a bit of F1 Light Green around the perimeter of the Marigold (**Image 8**). Add a bit of F2 Marigold Opal in the center then place some F1 Moss Green around it where the petals meet the center (**Image 9**). Add a bit of F2 Amazon Green Opal around the inner perimeter of the center and place a bit of F1 Pale Gray into the petals themselves (**Image 10**). Back everything with F2 White Opal until each daisy is roughly 3/8" full of frit (**Image 11**).

For the larger LF103 Daisy only continue to add F2 Clear on top of the White Opal until completely full. If using fill weights, this is around 215 grams of frit total (**Image 13**).

### For the Leaves:

Begin by adding a thin layer of F1 Teal Green to each leaf (**Image 11**). Back one leaf with F2 Amazon Green and the other with F2 Fern Green until each is approximately 3/8" full of frit (**Image 13**).

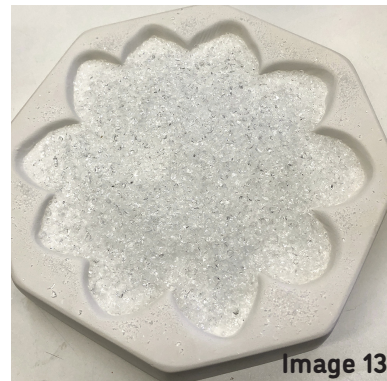


Image 13

Fire the LF186 to a Tack Fire using the suggested schedule in **Table 1** below or your own favorite Tack Fire. Fire the LF103 to a Full Fuse using the suggested schedule in **Table 2** below or your own preferred Full Fuse. To create the garden dish as shown, use the LF186 with these instructions several times to create a total of 5 small daisies and 7 leaves.

Seg.	Rate	Temp (°F)	Hold
1	275	1150	20
2	350	1420	05
3	9999	950**	60

\*\*If using COE90, adjust this to 900°F

Seg.	Rate	Temp (°F)	Hold
1	275	1150	20
2	50	1300	20
3	350	1465	05
4	9999	950**	60

\*\*If using COE90, adjust this to 900°F

\*Before firing, it's important to know your kiln to see if you need to adjust our suggested schedules for your use. For tips on how to do that, [please click here to see our Important Firing Notes!](#)

*Creative Paradise Inc.*

## Dropping and Draping (GM87 and GM90):

Prime both molds well before beginning. Once dry, place the GM90 on a level shelf in the kiln.

Clean any residual glass separator from your frit castings with some running water and a stiff-bristled (not wire) brush.

Cut a 10.25" diameter circle from a sheet of Standard Thickness Clear and arrange the casted bees, ladybugs, leaves, and small daisies in a single layer around the perimeter of the circle as desired (**Image 14**). The ladybugs can be overlapped with the daisies and leaves for a more realistic touch.

Center the large daisy on the primed GM90 in the kiln (**Image 15**) then place the primed GM87 on the feet of the GM90 as shown in **Image 16**. Carefully transfer the circle of Clear with the castings and center it on the GM87 Plate Ring (**Image 17**). Use a small level in the center of the clear circle to make sure everything is even. Remove the level and fire using the suggested Drop/Drape schedule in **Table 3** below.

After the glass is fired and cooled, remove the project from the kiln. If your dish has a slight wobble, you can lightly grind the edge of the large daisy serving as the foot to get everything to sit flat.



The project on the mold after firing.



**Table 3: Drop/Drape\***

Seg.	Rate	Temp (°F)	Hold
1	250	1150	45
2	350	1280	15
3	9999	950**	90
4	100	800	10

\*\*If using COE90, adjust this to 900°F

\*Before firing, it's important to know your kiln to see if you need to adjust our suggested schedules for your use. For tips on how to do that, [please click here to see our Important Firing Notes!](#)



The dish above was created using the same methods in this tutorial but alternate colors of frit and no bugs.

For more information, tutorials, and molds, visit our website: [www.creativeparadiseglass.com](http://www.creativeparadiseglass.com)

*Creative Paradise Inc.*