

# Reverse Weave Texture

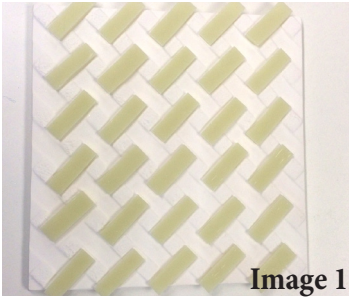


Image 1

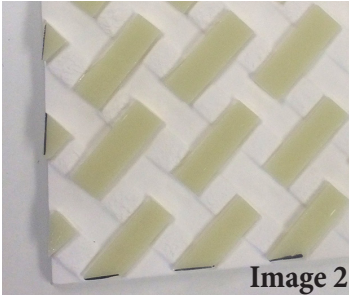


Image 2

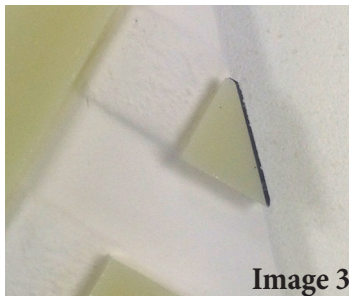


Image 3

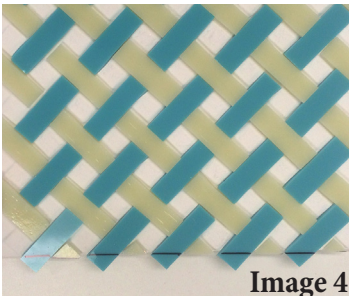


Image 4



Image 5

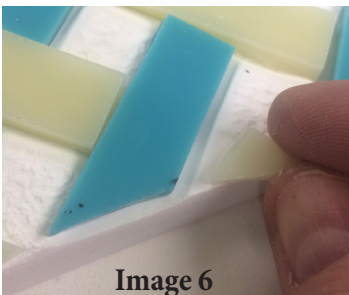


Image 6

**Materials Needed:**  
 Creative Paradise products: [GM132](#)  
[GX18](#)  
 COE 96 Glass-  
 Vanilla Cream, Peacock Green, Clear  
 Standard  
 Super Glue  
 Glass separator (ZYP preferred)  
 Glass Cutter

## General Instructions:

Begin by treating the molds with the glass separator spray in a ventilated area. We recommend ZYP. Several light coats with a short waiting period between coats is preferable to one heavy coat. Shake the can well before use and hold the can

upright while using to assure proper distribution of product. It is important to turn the mold to make sure you coat the mold cavity at all angles. [Click here for a tutorial on applying the ZYP.](#)

Cut 30 strips of Vanilla Cream that are 1/2" x 1 5/8". Place the strips in the grooves going one direction in the mold (Image 1). Some of the strips will hang over slightly. Use a ruler and a sharpie to mark the strips that are overhanging the edges of the mold, and cut the ends off (Image 2). The cut ends of those strips can work well to fill any unfilled small grooves on the sides of the mold (Image 3).

Repeat the steps in the above paragraph with 30 strips of Peacock Green in the same sizes. Use those strips to fill in the remaining grooves as well as the small ones on the edges (Image 4).

Cut an 8.5" x 8.5" piece of Clear Standard glass and place it over the strips on the mold (Image 5). It can be helpful to use superglue to hold the small triangle pieces to the strips they're making contact with (Image 6).

Place the clear-covered mold in the kiln and fire according to the suggested schedule in **Table 1** or your own favorite Full Fuse. Use soapy water and a firm-bristled brush to remove any residual separator from the glass. Once cooled and cleaned, the glass can then be fired texture-side down on the GM132 (that has been properly treated with separator) using either the suggested schedule in **Table 2** or your own preferred Slump Schedule.



Image 7



Segment	Rate	Temp (°F)	Hold
1	275	1215	45
2	50	1250	20
3	275	1460	0
4	9999	950**	60

Segment	Rate	Temp (°F)	Hold
1	275	1215	45
2	9999	950**	60

\*\*If using COE90 glass, adjust this temperature to 900°F

\*See "firing notes" to determine if this temperature is correct for your kiln

*Creative Paradise Inc.*