

# "One and Done" Pansy Platter



Image 1

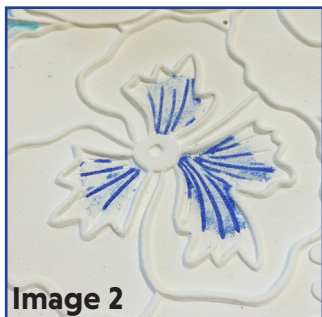


Image 2



Image 3



Image 4



Image 5

## Materials:

- [GM172 Round Pansy Platter](#)
- COE96 Double Thick Clear Sheet Glass
- COE96 Frits (See Right)
- Suitable Glass Separator/ZYP
- Frit Placement Tools
- Glass Cutting Tools

- F1 Powder Frits:
  - Pale Purple
  - Deep Purple
  - Cobalt Blue
  - Deep Aqua
- F2 Fine Frits:
  - Yellow Opal
  - Ivory Opal
  - Pale Amber Trans.
  - Medium Amber
  - Pale Blue
  - Hydrangea Opal
  - Lime Transparent
  - Moss Green Trans.
  - Light Green Trans.

Have Questions? Email us!  
[creativeparadiseglass.com](mailto:creativeparadiseglass.com)



*Creative Paradise Inc.*

Begin by treating your mold thoroughly with suitable glass separator. We recommend using spray-on ZYP. Remember to always wear a mask when applying spray-on separator and/or when using powder frit.

**Image 1:** After your separator has had plenty of time to dry, begin adding the frit. Start by using your fingers to gently press some F1 Cobalt Blue into the veins of the flowers and F1 Deep Aqua into the veins of the leaves. Remove any excess powder (**Image 2**). An Earwax Vacuum works well for this if you have one.

**Image 3:** Add F2 Yellow Opal to the ends of the inner pansy "petals."

**Image 4:** Place F2 Ivory Opal on top of the Cobalt Blue filled veins in the petals.

**Image 5:** Fill the remainder of the pansy petals with F2 Hydrangea Opal.

**Image 6:** Fill in the leaves with different shades of green. Here, Lime, Light Green, and Moss Green (all F2) were used.

**Image 7:** To outline the edges of the petals and make them pop, gently sprinkle F1 Pale Purple and F1 Deep Purple around the outer edges of the petals. Add some F2 Medium Amber followed by F2 Pale Amber to the area just outside the pansies. Lightly sprinkle F2 Pale Blue around the Amber to complete the design.

Cut a 12.75" diameter circle from Double Thick Clear sheet glass. Clean it well and place it on top of the frit-filled mold (**Image 7**). Fire using the suggested One-and-Done schedule in **Table 1**.

**Table 1: One-and-Done\***

Segment	Rate	Temp (°F)	Hold
1	275	1210	30
2	50	1250	30
3	350	1330	05
4	9999	1420	05
5	9999	950**	90
6	100	500	05

\*\*If using COE90, adjust this to 900°F

\*Before firing, it's important to know your kiln. For tips on how to do that, [please click here to see our Important Firing Notes!](#)

For more information, tutorials, and molds, visit our website: [creativeparadiseglass.com](http://creativeparadiseglass.com)



Image 6

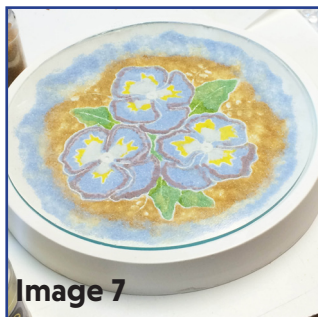


Image 7