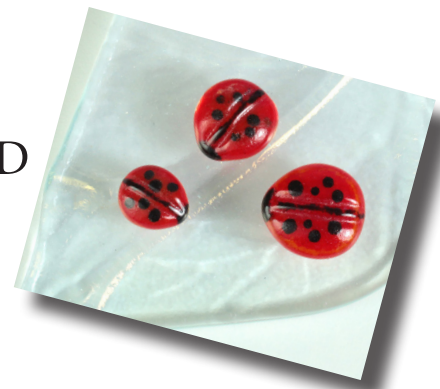




CUTE CATERPILLARS BUZZING BEES AND LOVELY LADIES

Creative Paradise Inc.



For Bug Bodies:

Before adding any glass to the mold, prepare it well with suitable separator. We recommend using spray-on ZYP. Remember to always wear a mask when using spray-on separator/powder frits!

Materials:

- [LF145 Garden Bugs](#)
- COE96 Frits:
 - F1 Powder Frits:
 - Black
 - Medium Amber
 - Orange Opal
 - F2 Fine Frits:
 - Clear
 - Light Cherry Red
 - Marigold
 - Sapphire Blue
 - Chestnut Opal
 - Yellow Opal
 - F3 Medium Frits:
 - Black
 - Lemongrass
 - Turquoise Blue
 - Light Cherry Red
 - Clear
- Suitable Glass Separator/ZYP
- Frit Placement Tools

Add F1 Black to the legs, stripes, and heads of the bees and ladybugs and the low center dashes of the caterpillar if desired (**Image 1**). Clean any stray frit with a small brush or Earwax Vacuum (**Image 2**). An Earwax Vacuum is a great tool for precise frit removal and can be found at many drugstores or online retailers.

Lining the bodies with Black like this is optional! You can use all kinds of colors and patterns instead. See the caterpillars on **Page 3** for more.



Image 1

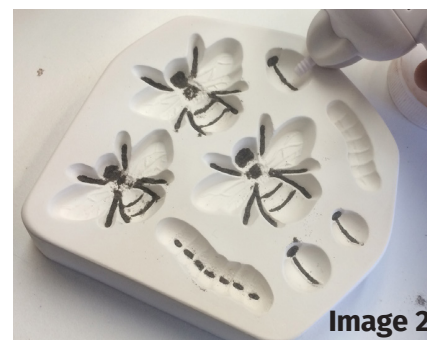


Image 2

Making Spots:

To create spots for the ladybugs (and caterpillars, if desired), place kiln shelf paper on a tile and spread out F3 Medium Black frit so that the grains are separated well (**Image 3**). Choose a fun bright color such as Lemongrass and/or Turquoise Blue and do the same with Medium Grain frit of those colors. Fire the separated grains of frit in a kiln at 500°F/hour to 1480°F, hold 10 minutes. Allow the kiln to cool naturally. When you open it, you'll find tiles filled with whimsical dots (**Images 4 & 5**)!

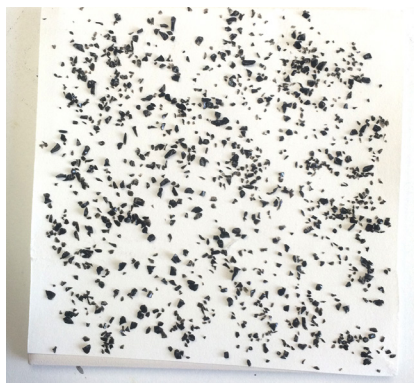


Image 3

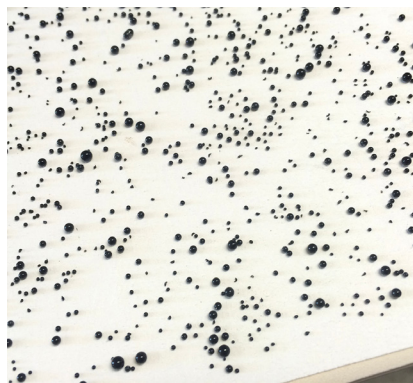


Image 4

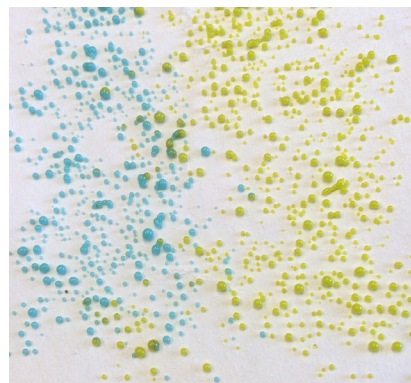


Image 5
(Fired Lemongrass and
Turquoise Blue)

Creative Paradise Inc.

Ladybugs:



Image 6

Place a small amount of F2 Clear in the base of each ladybug (**Image 6**). Choose a few of your spots from the “Making Spots” section on **Page 1** and arrange them in the Clear as desired (**Image 7**).



Image 8

Cover everything with a thin layer of F2 Light Cherry Red (**Image 8**).



Image 7

Back the Cherry Red with a thin layer of F2 Marigold (**Image 9**).



Image 9

Fill the remainder of the cavity with F3 Light Cherry Red (**Image 10**). If using fill weights, refer to **Table 3** on **Page 4**.



Image 10

Bees:



Image 11

Add a bit of F1 Medium Amber into the bodies and bases of the wings, then add some F2 Sapphire Blue to the wing tips (**Image 11**).



Image 13

Place F2 Chestnut Opal in the top portion of the body and over the front legs (**Image 12**).



Image 12

Add F2 Yellow Opal to the bottom portion of the body (**Image 13**).

Back everything with F3 Clear until full (**Image 14**). If using fill weights, refer to **Table 3** on **Page 4**.



Image 14

Caterpillars:



Image 15

There are a variety of ways to fill your caterpillars!

If you want to skip adding F1 Black to the bodies you could instead use F1 Orange Opal (**Image 15**) or Powder of any other color you'd like.

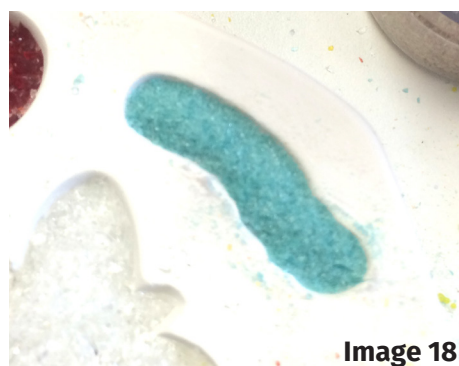


Image 18



Image 16

Or you could skip the body detail entirely and use spots. If adding spots like this, first add a layer of F2 Clear at the bottom, then place your spots as desired (**Image 16**).

Add a layer of Powder frit of a contrasting color atop either your outlines or spots (**Image 17**).

Then place a layer of Fine Opal frit of a different color over that (**Image 18**). Back everything with another Fine frit color of your choice. If using fill weights, refer to **Table 3** on **Page 4**.



Image 17

Once you're happy with your bugs, place the mold in the kiln and fire to a Full Fuse using the suggested schedule in **Table 1** to the right or your own preferred Full Fuse.



Image 19

Table 1: Full Fuse*

Segment	Rate	Temp	Hold
1	275	1215	45
2	275	1465	05
3	9999	950**	60

**If using COE90, adjust this to 900°F

*Before firing, it's important to know your kiln. For tips on how to do that, [please click here to see our Important Firing Notes!](#)



Creative Paradise Inc.



There are many uses for your little bugs! This bee on the left happily buzzes around the center of his flower, while his caterpillar and ladybug friends rest Tack Fired to the leaves. Refer to the suggested schedule in **Table 2** below for a Tack Fire, or use your own preferred schedule.

To attach a bee or other bug to a stemmed glass flower like this, cut an 8-9" piece of 18-gauge bare copper wire and stick 1/2" of one end into the frit of the desired bug before firing (**Image 19**). Cut a 1" circle and 3/4" circle of glass and place the other end of the copper wire between them. Rest the sandwiched wire on a piece of kiln shelf paper next to the mold as it fires (**Image 19**). The circles will fuse together and include the wire with your insect of choice (**Image 20**).

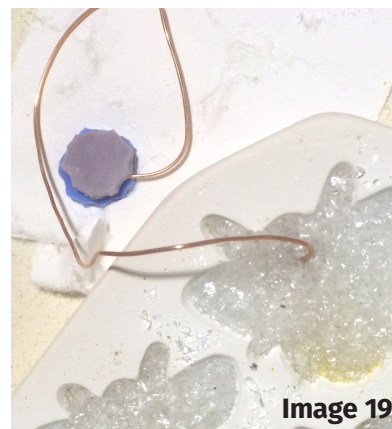


Image 19



Image 20

**Table 3:
Fill Weights**

Mold Cavity	Weight (Grams)
Large Bee	17 g
Medium Bee	15 g
Small Bee	10 g
Large Caterpillar	4 g
Small Caterpillar	3 g
Large Ladybug	2 g
Medium Ladybug	1.5 g
Small Ladybug	1 g

The glass circle can then be glued into the middle of the flower to hide the screw used to stem it as well as give it a whimsical bouncing friend!

This bee to the right was made using the instructions found in this tutorial. After he was fired he was Tack Fused onto a pre-fused and slumped flower using the suggested schedule in **Table 2** below.



Table 2: Tack Fire*

Segment	Rate	Temp (°F)	Hold
1	275	1215	20
2	50	1250	30
3	275	1330	10
4	350	1410	05
5	9999	950**	60

*Before firing, it's important to know your kiln. For tips on how to do that, [please click here to see our Important Firing Notes!](#)

**If using COE90, adjust to 900°F

For more info, molds and tutorials visit our website:
www.creativeparadiseglass.com

Creative Paradise Inc.