

Iridized Striped Plate

Creative Paradise Inc.



Materials:

- [GM87 Large Plate Ring](#)
- [COE96 Sheet Glass](#):
 - Clear Iridized
 - Medium Amber Trans.
 - Black Opal
 - Almond Opal
- Suitable Glass Separator/ZYP
- Thin Fire Paper
- Glass Cutting Supplies

Begin by treating the GM87 Plate Ring well with suitable glass separator.

We recommend spray-on ZYP. **If using a spray-on separator, make sure to wear a mask while applying.** For a video on applying spray-on separator, [please click here](#).

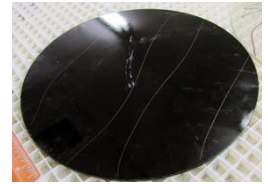


Image 1

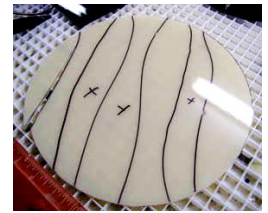


Image 2

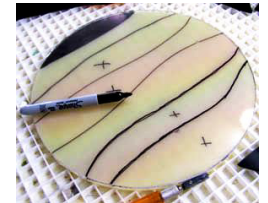


Image 3



Image 4



Image 5



Image 6

After priming the mold, cut one 10" diameter circle from each of the four colors of sheet glass.

Cut the Black circle into 7 irregular stripes (**Image 1**). Reassemble the Black stripes to reform the complete circle on top of the Almond circle, then remove each stripe of Black from the Almond one at a time and use a Sharpie or other marker to trace the cut edge of the glass onto the Almond (**Image 2**). This will duplicate the stripe pattern onto the Almond circle. Place the Clear Irid circle with the iridized surface facing down on top of the marked Almond circle and trace over the pattern once again to duplicate it onto the Clear Irid circle as well (**Image 3**).

Cut along the marker lines on the Almond and Clear Irid circles. At this point you should have matching irregular stripes of Black, Clear Irid, and Almond. Assemble the stripes in an alternating color pattern on top of the circle of Medium Amber (**Image 4**). There should be one full circle from the stripes, then another from the Medium Amber so the plate is uniformly two layers of glass thick. Make sure the iridized surface is facing down towards the Medium Amber. If desired, add additional nipped bits of other colors as decoration around the rim of the circle (**Image 5**). Almond and Medium Amber were used as the decoration on this example.

Place the project on a suitably sized sheet of Thin Fire Paper on a level shelf in the kiln and fire using the suggested schedule in **Table 1** or your own preferred Full Fuse.

Once the glass is fused and cooled, place the primed mold directly on top of a sheet of Thin Fire Paper on a level kiln shelf in the kiln and center the fused glass blank on top of the Plate Ring (**Image 6**). Fire the project using the suggested schedule in **Table 2** or your own preferred Drop schedule.

Seg.	Rate	Temp (°F)	Hold
1	250	1100	10
2	250	1360	20
3	250	1465	10
4	9999	950**	75
5	100	815	01
6	100	500	01

**If using COE90, adjust this to 900°F

Seg.	Rate	Temp (°F)	Hold
1	250	1100	10
2	300	1270	30
3	9999	950**	60
4	100	815	01
5	100	500	01

**If using COE90, adjust this to 900°F

*Before firing, it's important to know your kiln. For tips on how to do that, [please click here to see our Important Firing Notes!](#)



For more information, tutorials, and molds, visit our website:
www.creativeparadiseglass.com



If you cut two more 10" Medium Amber circles, you have enough glass to create two additional plates with different stripes. Additionally, you can raise the GM87 to create a matching bowl, or use the [GM90 Foot Drape](#) to create an elegant footed dish such as the one shown above. For a tutorial on that, [please click here](#).