

Fused Glass Cameos

Creative Paradise Inc.

General Materials:

- Cameo Mold of Choice (See Right)
- Suitable Glass Separator (We recommend ZYP)
- Fusible Compatible Frit(s) of Choice
- Frit Placement Tools

Cameo Molds:

- [LF92 Cameo](#)
- [LF93 Dragonfly](#)
- [LF94 Tree of Life](#)
- [LF95 Skull](#)
- [LF96 Cameo II](#)
- [LF97 Praying Hands](#)
- [LF98 Angel](#)

Begin by treating your chosen cameo well with suitable glass separator. **Always wear a mask when using spray-on separator and/or powder frits!**



Image 1



Image 2

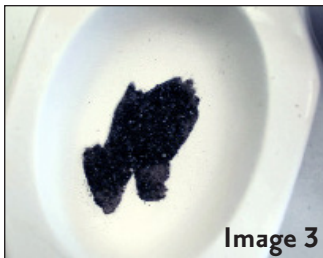


Image 3



Image 4



Image 5

www.creativeparadiseglass.com

After your separator has dried, begin by placing powder grain frit into the lowest recesses of the cameo design (**Image 1**). Use a small brush to carefully sweep any stray frit back into its proper area but be sure to disturb the glass separator as little as possible. Frit of any color can be used to fill the cameo design, but the designs work best when the frit and the background glass are contrasting.

You can use different colors of powder frit within the design as well. **Image 1** shows the outline filled with FI Powder Black frit while **Image 2** shows FI Powder Deep Aqua added in the wings over the Black.

Powdered frit will shrink dramatically at Full Fuse temperatures, so it's helpful to add some fine grain frit to larger design areas. Use powder frit first to create a smooth and detailed design then use fine frit as filler in the larger cavities, such as the praying hands shown in **Image 3**.

Once the recessed design of the cameo is fully filled and any stray frit cleaned, any color, opacity, and grain size of frit can then be used to make the background (**Image 4**). Small pieces or flakes of dichroic glass can also be added for a bit of sparkle.

Keep in mind that the glass facing you as you look down into the mold is the glass that will be away from you as you look at the cameo after firing. If Dichroic on Black is used for example, it should be turned dichroic side down in the cavity of the mold to be seen dichroic side up in the finished piece. See **Table 2** for suggested Fill Weights.

After all the frit is in place, gently sweep it away from the walls of the mold and mound it towards the center to help the glass roll during fusing and create a smooth edge (**Image 5**). Place the filled mold in the center of the kiln on a level kiln shelf and fire to a Full Fuse using the suggested schedule in **Table 1** or your own favorite Full Fuse.



LF92



LF93



LF94



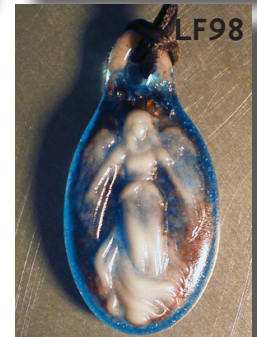
LF95



LF96



LF97



LF98

Table 1: Full Fuse*

Seg.	Rate	Temp (°F)	Hold
1	300	1100	10
2	200	1250	30
3	275	1300	10
4	275	1465	10
5	9999	950**	60
6	100	800	01

**If using COE90, adjust to 900°F

*Before firing, it's important to know your kiln. For tips on how to do that, [please click here to see our Important Firing Notes!](#)

Table 2: Fill Weights

Mold	Fill (g)	Mold	Fill (g)
LF92	24	LF96	30
LF93	28	LF97	30
LF94	30	LF98	44
LF95	30		